

EXTENSION NEWS ■ ENP ■ MASTER GARDENER ■ 4-H

~ KEEPING OUR COMMUNITY CONNECTED ~

EXTENSION CONNECTIONS

University of Idaho
Boundary County
Extension Service
PO Box 267
Bonners Ferry ID 83805
208.267.3235 Phone
boundary@uidaho.edu



How to Hydrate

Fluid needs depend on many factors, including body size, age, activity level, climate, and diet. Because needs are so individual, there are no recommended intake levels that apply to everyone. Instead, the U.S. National Academies of Sciences Institute of Medicine has set an "Adequate Intake" level. In addition to the fluids we get from foods (especially fruits and vegetables), men should, on average, consume at least 12 cups of fluid a day from water and other beverages. Women should have a minimum of nine cups. Consider putting that much water in a container at the start of the day and trying to get through it by day's end.

Water is a great choice, but other unsweetened beverages, such as low-fat or fat-free milk and fortified soy beverage, can support fluid intake while helping us reach our dietary intake recommendations for different food groups and nutrients. While electrolyte drinks are advertised to help keep you hydrated, studies have shown electrolyte loss through typical physical activity is generally small, so these (often sweet) beverages are unnecessary for most situations.

To make flavored waters at home, use your imagination, or try the ideas below. Experiment with ingredients and proportions to suit your taste.

Potential Ingredients:

Juicy fruits (like citrus, ripe pineapple, watermelon, and berries)—fresh or frozen, or cucumber
Herbs like mint, basil, sage, and rosemary

Steps:

1. Place fruit in 2-quart mason jar or pitcher and press and twist with a muddler or the handle of a wooden spoon to release some of the juices, but don't pulverize the fruit into pieces.
2. Fill the jar with ice. Pour in water to the top. Stir with a handle of a wooden spoon or a chopstick. Put a lid on it, put it in the fridge, and chill. Keep up to three days in the refrigerator.

Source: Adapted from Tufts Health & Nutrition Letter July 2022, Vol. 40, No. 5 & August 2020, Vol. 38, No. 6



**The Extension Office is closed
Monday, July 4th**



Inside This Issue

Extension Office Hours 8:00 a.m.-5:00 p.m.	
Master Gardener Column— Herbicide Carryover	2
Ch-ch-ch-chia	3
Master Food Safety Advisor Column—Should I Have My Water Tested	4-5
Workshops, Programs, Bulletins, and Classes	6-9

4-H Clover Talk

July/August

4-H Calendar	10
4-H Calendar Cont.	10
Organizational Clubs & Project Meetings & Reports	11
Family Fun Night Royalty	11
Livestock News	12
Livestock & Leaders Meeting Minutes	13-16
Animal Care During Fair	13
Style Revue	13
Project Requirements	14
Completion Requirements	14
Livestock Judges Preferences	15
Herdsmanship Contests	16
Interview Judging	17
Fair Entry Forms	17
Community Pride	17
Robotics Programs	18-19
Summer Day Camps	19
C.O.O.L. Form	20
Camp Clover	21-22
4-H Friday Friends	23
Thank You Notes & Blue Sky	23
4-H/FFA Livestock Rules & Regulations & Memorial Hall Exhibit Rules	24-25

Master Gardener Column



Herbicide Carryover in Hay, Manure, Compost, and Grass Clippings

Aminopyralid, clopyralid, and picloram are in a class of herbicides known as *pyridine carboxylic acids*. They are registered for application to pasture, grain crops, residential lawns, commercial turf, certain vegetables and fruits, and roadsides. They are used to control a wide variety of broadleaf weeds including several toxic plants that can sicken or kill animals that graze them or eat them in hay. Based on USDA-EPA and European Union agency evaluations, when these herbicides are applied to hay fields or pasture, the forage can be safely consumed by horses and livestock—including livestock produced for human consumption. These herbicides pass through the animal's digestive tract and are excreted in urine and manure. They can also remain active in the manure even *after* it is composted. The herbicides can also remain active in hay, straw, and grass clippings taken from treated areas. The herbicides leach into the soil with rainfall, irrigation, and dew. As with many other herbicides, they can remain active in the treated soil.

Picloram, clopyralid, and aminopyralid can remain active in hay, grass clippings, piles of manure, and compost for an unusually long time. These herbicides eventually break down through exposure to sunlight, soil microbes, heat, and moisture. Depending on the situation, the herbicides can be deactivated in as few as 30 days, but some field reports indicate that complete deactivation and breakdown can take *several years*. Hay has been reported to have residual herbicide activity after three years' storage in dry, dark barns. Degradation is particularly slow in piles of manure and compost. When mulches, manures, or composts with residual herbicide activity are applied to fields or gardens to raise certain vegetables, flowers, or other broadleaf crops, potentially devastating damage can occur.

Crops known to be sensitive to picloram, clopyralid, or aminopyralid:

Beans, Carrots, Compositae family, Cotton, Dahlias, Eggplant, Flowers (in general), Grapes, Legumes, Lettuce, Mushrooms, Peas, Peppers, Potatoes, Roses (some types), Spinach*, Sugar beets*, Strawberries*, Sunflowers, Tobacco, Tomatoes, Umbelliferae family, Vegetables (in general)

*Applies to aminopyralid and picloram only.

How to Test for the Presence of Herbicides: Pot and Field Bioassays

Some laboratories can test for the presence of these herbicides, but the tests are expensive and may not be as sensitive as a plant bioassay that you perform yourself. This simple pot bioassay involves growing beans, peas, or tomatoes, which are very sensitive to the presence of these herbicides, in the aged manure or compost.

First, take a number of random, representative samples (small shovelfuls) from throughout the pile of aged manure or compost, being sure to get deep inside the pile. Mix thoroughly. If there are separate sources of manure or compost, conduct individual assays for each. Prepare three to six small 94-to-5-inch) pots with a 1:1 mix of the manure or compost with a commercial potting mix containing fertilizer. Fill several control pots with only the commercial potting mix. Put saucers underneath each pot, or position the pots far enough apart so that water running out of the bottom will not reach another pot. Plant three pea or bean seeds in each pot, water, and let them grow for two to three weeks. There should be at least three sets of true leaves on the peas or beans.

If the plants in the control pots grow normally and the ones in the pots with manure or compost do not, you can assume the manure or compost is contaminated with an herbicide that will adversely affect sensitive plants. If they all grow normally, it would be reasonable to assume that the manure or compost is fine. A similar test can be done with young tomato transplants, but herbicide damage may not appear until the plants first set fruit. In our studies, fruiting occurred five to seven weeks after the plant had been set in the mix. Keep in mind that these tests will be only as good as the samples you take. It would be better to err on the side of too many samples than too few (at least 20 per pile). You can create a similar test for hay or grass clippings by filling the pot with commercial potting mix and spreading a thick layer of the hay or grass clippings on top. This bioassay is explained in detail on the [Corteva Agriscience Manure Matters web site](#) and on the [Washington State University web site](#) (it recommends two parts potting soil).

If a field or garden site has previously been treated with one of the herbicides of concern or been contaminated through the application of treated manure, compost, hay, or grass clippings, a field bioassay can be conducted. Plant peas or beans in short rows scattered throughout the affected area. If herbicidal symptoms appear, do not plant sensitive plants; plant grasses. Test again the following year. If the test plants grow normally, it should be safe to grow broadleaf crops.

Source: Adapted from <https://content.ces.ncsu.edu/herbicide-carryover>

Ch-ch-ch-chia!



Thought the chia seeds were only for Chia Pets? Think again. For starters, the tiny-but-mighty seeds offer an impressive bundle of nutrients.

What are Chia Seeds?

Chia (*Salvia hispanica L.*) is a desert plant that was cultivated for centuries by the Aztecs of ancient Mexico. Chia seeds were a very important crop of the Aztec people, along with corn, as they incorporated these seeds into their daily diet. *Salvia columbariae*, a slightly different plant than that grown in ancient Mexico, can be found in California, Nevada, Arizona, and New Mexico. The Native American tribes of California used this variation of chia seeds as a source of food and for medicinal purposes.

A standard serving (about 3 tablespoons) is rich in heart-healthy polyunsaturated fats, and is loaded with zinc, iron, and magnesium...all for only 150-or-so calories.

And if you're looking for fiber, you've come to the right seed. A serving of chias delivers a whopping 10 grams. Plus, you get a decent dose (5 grams) of plant protein.

But it's not just about nutrients. A spoonful or two adds a hearty, filling texture to oatmeal or overnight oats.

How do chia seeds turn into pudding? When you add water, milk, or another liquid, they absorb some of it and form a gel. That also makes them easier to chew.

Chocolate Chia Pudding

Whisk together $\frac{1}{2}$ cup chia seeds, $\frac{1}{4}$ cup cocoa powder, $\frac{1}{8}$ tsp. salt, 1 tsp. vanilla extract, 2 Tbs. maple syrup, and 2 cups milk. Let sit 15 minutes. Whisk again. Spoon into 4 cups. Chill until set. Top with berries.

Fresh Berry Chia Seed Jam

Serving Size: 1 Tablespoon, 15 servings

Ingredients:

1 cup berries (Use fresh berries when in season, and use frozen in the off season. If you are using fresh berries, wash before using them!)

- 1 Tbs. chia seeds
- 1 Tbs. warm water
- $\frac{1}{2}$ Tbs. honey
- $\frac{1}{2}$ Tbs. granulated sugar
- 1 tsp. vanilla

Directions

1. Combine all ingredients in a food processor or blender and mix to desired consistency.
2. Place in airtight container and refrigerate for 60 minutes before serving.

Per Serving:

18 calories, 0.3g Total Fat, 4g Carbohydrates, 0.2g Protein, 1g Fiber

Suggested Uses and Recipes

It is very simple to add chia seeds to smoothies or juices, which is a great option to boost the nutritional value of your drink. A popular way to consume chia seeds is to simply add them to water with a splash of lemon or lime juice: this is called Chia Fresca. Mix 12 ounce cold, drinking water, 2-3 tablespoons of lemon juice, 1-2 teaspoons chia seeds and let it sit for about 5 minutes. Add sweeteners, if you desire. First, make simple syrup—dissolve sugar in boiling water, then add to your Chia Fresca.

There are several ways to incorporate chia seeds into baking, as well, with many recipes available online.

Lemon Chia Seed Muffins

Makes 12 muffins, 2" diameter

Ingredients:

$1\frac{3}{4}$ cups all-purpose flour
 $\frac{3}{4}$ cups granulated sugar
2 tsp. baking powder
 $\frac{1}{4}$ tsp salt
 $\frac{3}{4}$ cup part-skim ricotta cheese
 $\frac{1}{2}$ cup water
 $\frac{1}{4}$ cup light olive oil
Zest of 2 lemons
3 Tbs. fresh lemon juice
1 egg
2 tsp chia seeds
Cooking Spray



Directions

1. Preheat oven to 375°F. Line a standard muffin pan with cupcake liners and lightly coat with cooking spray.
2. In a large bowl, whisk together the flour, sugar, baking powder, and salt.
3. In a separate bowl, mix together ricotta cheese, water, olive oil, lemon juice & zest, and egg.
4. Make a well in the center of the dry ingredients, pour the wet ingredients into the middle, then mix together with a wooden spoon.
5. Next, add the chia seeds and gently fold into batter.
6. Evenly divide the batter into prepared muffin pan using a large scoop.
7. Bake for 16 minutes or until a toothpick inserted in the middle comes out clean.
8. Allow to cool completely and then store in an airtight container for up to 5 days.

Per Serving:

149 Calories, 2.5g Total Fat, 28g Carbohydrates, 4.4g Protein, 1g Fiber

Sources: Adapted from April 2022 Nutrition Action Newsletter and The University of Arizona Cooperative Extension Publication az1692



Should I Have My Water Tested?



The answer to this question is based on several factors, but simply stated it is one way to make sure your home's water is free from any contaminants that could be harmful to your health or are a nuisance.

Any time you notice a significant change in your water quality, you should consider having it tested. A change in your water's taste, color, or smell is not necessarily a health concern. However, sometimes changes can be a sign of problems such as obvious stains on your porcelain fixtures, taste, or odors in your water. These aesthetic problems can sometimes be a symptom of a pollutant that can be confirmed through testing by a certified lab.

The first thing you need to know is where do you get your water supply? By that I mean, is your water supplied through a **public water system** or is it a **private source such as a well, cistern, or spring**? You may even receive your water supply through a combination of public and private water.

If you belong to a public water system such as Three Mile, Cabinet Mountains, or the City of Bonners Ferry, the good news is that most of the hard work is done for you. If you are experiencing a change in your water, you should contact your water district. Check your water bill to determine which district you belong to. Each district will be able to provide you with their annual testing results and perhaps help you troubleshoot your concerns. You can usually find a lot of information about your public water system on each district's website.

If you still want to test your water on your own, I've listed labs at the end of this article where you can send in your water sample following the lab's specific collection instructions.

If your water is supplied using a well, spring, or cistern, unlike public water systems, private water testing **IS NOT** required and is the responsibility of the homeowner. You should consider having your water tested routinely for the following reasons:

1. Unlike public water systems, private water supply testing is the voluntary responsibility of the

homeowner. There are no government agencies or programs that routinely test private water systems for homeowners.

2. Surveys indicate that about half of the private water supplies have never been tested.
3. Additional studies have found that about 50 percent of private water systems fail at least one drinking water standard.
4. Many pollutants found in private water systems have no obvious symptoms and can only be detected through laboratory testing.
5. Water testing is generally economical and convenient with many testing laboratories located throughout the state.
6. Water testing provides vital information to document the quality of your drinking water. Data from previous tests may be necessary if you ever need to prove in court that a nearby land use has damaged your drinking water quality.
7. The only way homeowners can be certain that their water is safe to drink is to have the water tested routinely! *

What is meant by "routine testing"?

- A. Each year you should do a thorough inspection of your private water supply. Have your system inspected by a professional at least every 10 years.
- B. Each year test your home drinking water for coliform bacteria and *E. coli* bacteria. They are common in soil and surface water and may even occur on your skin. Large numbers of certain kinds of coliform bacteria can also be found in waste from humans and animals. Most types of coliform bacteria are harmless to humans, but some can cause mild illnesses and a few can lead to serious waterborne diseases, especially for the very young, elderly, and for individuals with a compromised immune system. If coliform bacteria are found in a water supply, a follow-up test can be done by the laboratory to look for *E. coli*—a type of coliform bacteria found only in human or animal wastes. A positive *E. coli* result is much more serious than coliform bacteria alone because it indicates that human or animal waste is entering the water supply.

Continued on page 5

- C. Every three years test for pH, total dissolved solids (TDS), and other contaminants based on locally occurring land use activities such as agricultural runoff of fertilizers or pesticides, or homes situated near old mining fields. Water with a pH lower than 6.5 or greater than 8.5 can cause corrosion of lead and copper from household plumbing or bad tastes. The total dissolved solids content of drinking water should be below 500 milligrams per liter (mg/L), and the value should not change much from one test to the next. Increases in the TDS of water could indicate pollution has occurred, warranting further, detailed testing.

Some common drinking water symptoms and their associated pollutants are given in the following table: **

Symptom	Pollutants to test for
Orange-brown stains, metallic taste	Iron, Manganese
Black flecks or stains	Manganese, Iron
White/gray film, increased soap use, damaged hot water heater	Hardness
Salty taste	Chloride
Blue-green stains, metallic taste, especially early in the morning, small leaks in metal plumbing	pH, Corrosivity Index (A measure of water quality that is used to determine whether the water will cause corrosion in the pipes or will form a scale that can create blockages.), Copper, Lead

Other pollutants that may require further testing:

Arsenic

Naturally occurring in rock and sometimes found as an industrial byproduct, arsenic has been found in the groundwater of every state in the U.S. Exposure to this harmful contaminant may cause cancer, skin changes, gastrointestinal symptoms or disturbances of cardiovascular and nervous system functions.

Fluoride

Every person reacts to minerals differently. Fluoride is no different. As with all minerals, overexposure remains a danger. Teeth can become permanently damaged with discoloration. Or neurotoxicity could occur and alter the normal activity of the nervous system.

Lead

Lead typically enters a water supply through the plumbing, i.e., old plumbing. It is a primary concern for homeowners. Because it can be especially harmful for pregnant women, infants and young children. Detrimental effects range from stomach pain to brain damage.

Calcium and Magnesium

Minerals like calcium, sodium and magnesium do not necessarily have a direct impact on your health. But their presence causes hard water. Hard water results in dry, itchy skin. Another sign includes reduced lifespan of clothing and household appliances.

Nitrates

Phosphates and nitrates can leach into the groundwater. And those chemicals cause a number of health issues, such as kidney problems and cancer. These risks are especially high for pregnant and nursing women, infants and the elderly.

Where to Get Drinking Water Tested and Who Should Collect Samples?

All water tests should be done by a certified lab. This lab will help you understand your test results. These tests are similar to a doctor taking your temperature—they are general tests that provide an index to the quality of your drinking water.

I'm happy to let you know that drinking water test kits through SVL Analytical are now available at the UI Extension, Boundary County office located at 6447 Kootenai Street. Contact the Extension office for more information on the instructions for the water test kits. If you prefer to use another lab, follow this link for a list of certified labs: [Idaho-Labs-Certified-to-Conduct-Drinking-Water-Testing- 10 2017.pdf](https://www.idaho.gov/sites/default/files/2015-11/documents/2005_09_14_faq_fs_homewatertesting-10_2017.pdf).

For even more information on testing your home water, check out his link from the EPA. https://www.epa.gov/sites/default/files/2015-11/documents/2005_09_14_faq_fs_homewatertesting.pdf

Written by Alicia Alexander, MFSA with help from the sources listed below:

Sources:

Steve Swan, retired water topic expert who also teaches a course on making water safe in emergencies.

Staff at SVL Analytical <https://www.svl.net/>

Wellowner.org <https://wellowner.org/>

*Testing Your Drinking Water, Author: Bryan Swistock Senior Extension Associate; Water Resources Coordinator, Penn State College of Agricultural Sciences research and extension programs, 2022 <https://extension.psu.edu/testing-your-drinking-water>

**Idaho Department of Water Quality <https://www.deq.idaho.gov/water-quality/drinking-water/> and [directory of labs.](#)

***Culligan: <https://www.culligannation.com/home-water-testing-importance>

Workshops, Programs, Bulletins & Classes

Due to space restrictions, proper planning of handouts and trying to ensure an effective learning environment, all Extension sponsored workshops, programs and classes require **pre-registration**. Please contact the Extension office listed for the workshop, program or class you wish to attend.

The University of Idaho Boundary County Extension Office does not want anyone denied access to educational classes based on inability to pay. To inquire about scholarship availability, contact the Boundary County Extension Office at 208-267-3235.

DIAL PRESSURE GAUGE TESTING



A free dial pressure gauge testing clinic will be held on the first Tuesday of the months May-September.

DATES: May 3, June 7, July 5, August 2, September 6

- * Please plan on bringing your canner lid in to the office and leaving for 24 hours.
- * A \$2.00 fee will be imposed for those brought in on other days for on demand testing.
- * Dial gauges need tested every year

If your pressure canner only has a weighted jiggle, it does not need to be tested.

UI Extension Sheep and Goat Monthly Webinar:

UI Extension offers webinars on sheep and goat topics. Follow them on Facebook @UISheepandGoats for the current schedule of topics.



Pesticide Math Online Training for Pesticide Applicators

The UI Extension Pesticide Safety Education Program has produced three educational ONLINE TRAINING courses. Get FREE access now!

Simply, create your account at the National eXtension website by using this address:
<https://campus.extension.org/course/view.php?id=1588>. Each user must have their own identification name and password. Once you confirm your free account, you will have UNLIMITED access to these online educational materials.

The Calculate Pesticides series includes real-world pesticide calculations in the following courses:

- General Math—you will review basic math concepts needed for calculating pesticides.
- Using Sprayers—you will develop math skills for calibrating yourself to application equipment.
- Application Rates—you will identify the math formulas necessary to calculate pesticide application rates.

For More Information:

Pesticide Safety Education Program CAL5-IPM@uidaho.edu
www.uidaho.edu/extension/ipm



Drought Resources for Livestock Producers

FREE

Video Collection Link: <https://bit.ly/UIDrought>

These videos are provided to help livestock producers address challenges in times of drought.

- Possibilities of Grazing CRP in Times of Drought
- Drought Resources for Livestock Producers
- Early Weaning; A Drought Management Strategy
- Feeding Straw During Drought
- Ammoniating Straw for Beef Cows
- Strategic Supplementation for Drought and Dormant Season Grazing
- Utilization of Drought Damaged Feeds
- Culling and Marketing Strategies for Drought



Follow UI Extension, Boundary County on Facebook:
www.facebook.com/UIExtensionBoundary



University of Idaho
Extension
Pesticide Safety Education

Workshops, Programs, Bulletins & Classes

Air Frying Fun!

Thursday, July 7, 2022
11:00 AM-12:00 PM
Via Zoom
Cost: FREE



Join us to learn how simple and fun it can be to use an air fryer to prepare a quick meal for you and others! This program will teach participants the basics of air fryers including settings, ease of use and considerations. This class is great for anyone looking to purchase an air fryer or wondering how to put one they own to better use! Email amrobertson@uidaho.edu to get the registration link.

Harvesting & Storing Garden Vegetables

Wednesday, July 27, 2022
3:30 PM-5:00 PM
Via Zoom
Cost: FREE



Join us for a free online workshop on how to identify the proper stage of maturity to harvest garden vegetables for peak flavor, nutrition, and storage.

Email amrobertson@uidaho.edu for the registration link.

Restoring Idaho Streams:

Tools for Landowners
Bonner's Ferry/ Boundary County
Thursday, August 18, 2022
8:00 am to 4:30 pm
Boundary County Extension Office
6447 Kootenai Street
Cost: \$20



Idaho landowners who have a perennial stream running through their property often want that stream to be as stable and healthy as possible, both for the health of their stream and the health of their property. This one day program will use a combination of indoor presentations and a field trip to help participants assess streams on their property and undertake management practices to improve stream health and stability.

To **Register:** Contact the Boundary County Extension Office @ 208-267-3235.

Virtual Freeze Drying

Thursday, August 25, 2022
11:00 AM-Noon
Zoom
Cost: FREE



Want to learn about freeze dryers designed for home use? This is the online class for you! During this class you will learn about the various freeze dryer models, purchasing and maintenance costs, how to operate a freeze dryer, and proper storage of freeze-dried goods. We will also show you how to prep food and begin the freeze-drying process. Email amrobertson@uidaho.edu to get the registration link.

Dutch Oven Cooking

Thursday, September 8, 2022
10:00 AM-2:00 PM
Boundary County Fairgrounds
Indoor Arena
Cost: \$15



Learn how to make delicious food while cooking outdoors using a Dutch oven. We will also cover proper care, storage, and tips for the Dutch oven. This hands-on class will teach how to make a variety of dishes including breads, desserts, main dishes, and vegetables. The class will end with a picnic lunch as participants get to eat the food we make during the class.

Space is limited to 15 people so call the Boundary County Extension Office @ 208-267-3235 to reserve your spot.

Smoking & Grilling

Wednesday, September 21, 2022
10:00 AM-2:00 PM
Memorial Hall @ Boundary County
Fairgrounds
6571 Recreation Road
COST: \$20



This hands-on class will feature demonstrations as well as hands-on activities. We will learn how to prepare a variety of foods using either a smoker or a grill. We will also share tips and tricks on how to make sure your food is both safe and delicious!

Contact the UI Boundary County Extension Office to **register**, 208-267-3235.

Workshops, Programs, Bulletins & Classes

Growing Garlic in North Idaho

Thursday, September 22

1:00 PM-3:00 PM

Boundary County Extension Office

6447 Kootenai Street

COST: \$5



Growing Garlic in North Idaho – Fall is the time to plant garlic cloves! In this class you will learn about different garlic varieties and how best to grow them in your North Idaho garden. From planting in the fall to harvesting the following season we will discuss soil preparation, planting, irrigation and harvesting and storage. Although this crop is generally easy to grow, we will also discuss possible pests.

To **Register:** Contact the Boundary County Extension Office @ 208-267-3235.

Lunch and Learn Garden Series

Bonner County Extension Office, 4205 North Boyer Rd., Sandpoint



July in the Garden – July 15, 2022 Noon – 1pm Bring your sack lunch and join us to discuss July gardening tasks. We will discuss irrigation, succession planting and pests you might be experiencing. This class is free. Please call the Bonner County Extension Office to **register**, 208-263-8511.

Garden Harvest – August 5, 2022 Noon – 1pm Bring your sack lunch and join us to learn about harvesting, food safety in the garden and storage techniques. This class is free. Please call the Bonner County Extension Office to **register**, 208-263-8511.

Fall Garden Crops – September 9, 2022 Noon – 1pm Bring your sack lunch and join us to learn about planting and harvesting fall garden crops. This class is free. Please call the Bonner County Extension Office to **register**, 208-263-8511.

Virtual Fermentation

Thursday, September 29, 2022

11:00 AM-Noon

FREE

Zoom



Learn the basics of fermenting foods for preserving the harvest and enhancing the nutritional value, healthfulness, and digestibility of foods. This online class will also cover safe storage of fermented foods. Email amrobertson@uidaho.edu to get the registration link.

All Equipment Provided

Location: UI Extension Conference Room

Time Choices:

8:30 a.m. Tuesday, Thursday

Strong Women Stay Young — 2X/wk

10:30 a.m. Tuesday, Thursday

Strong Women Strong Bones — 2X/wk

Cost: \$30 * for 10 week session

Your place is reserved when payment is received

*Scholarships available contact Angela at 208-267-3235

**Register @ UI Extension Office, 6447 Kootenai St.
(208)267-3235**

LIFTING WOMEN TO BETTER HEALTH



STRONGWOMEN

STRONG WOMEN PROGRAM

Please join us for new
strength training sessions
Sept. 13-Nov. 17, 2022

The objective of the Strong Women Program is to improve the health of women by increasing access to safe, structured and effective strength training exercises and nutrition programs.

Workshops, Programs, Bulletins & Classes

Assisted Migration Field Day

Blanchard

Friday, July 15, 2022

9:00 AM-4:00 PM

Blanchard Community Center

685 Rusho Ln



Tree species vary widely regarding flexibility for moving seed from a tree at one location to a different one (e.g. different latitude or elevation). One way we assess different seed sources' adaptations to different locations is through provenance testing where trees from multiple seed sources are planted together on one or more sites.

This field day will visit an Idaho Assisted Migration Adaptation Trials (AMAT) testing site and longer-term USFS provenance tests to acquaint forest owners and foresters with provenance testing and more recent assisted migration research.

A \$15 registration fee covers handouts and refreshments. Class size is limited. To **register** contact the Bonner County Extension Office @ 208-263-8511.

Forest Insects & Disease Field Day

St. Maries

Friday, August 2, 2022

8:00 AM-5:00 PM

Meet at the Benewah County Fairgrounds

This one-day field trip will give participants first-hand exposure to a wide range of insects, diseases, and parasitic plants that impair the growth of trees and forests in northern Idaho. Experts will be on hand to help participants identify insect and disease symptoms and discuss practical methods of dealing with them.

To ensure an effective learning environment, registration for this session is limited. **A \$15 registration fee** covers handouts and refreshments.

For **registration** questions, contact the UI Extension Office in Benewah County at 208-245-2422.



The program is co-sponsored by University of Idaho Extension, Idaho Department of Lands, and USDA-Forest Service.



Landscaping for Fire Prevention

Blanchard

Saturday, July 9, 2022

10:00 AM-Noon

Blanchard Community Center

685 Rusho Lane



Bonnors Ferry

Friday, August 19, 2022

1:00 PM-4:00 PM

Kootenai River Inn

7169 Plaza Street

In this class, forest homeowners learn how to make their home site less likely to burn and easier for firefighters to access in the event of a local forest fire.

A \$10 registration fee covers handouts and refreshments. Class size is limited.

To **register** for the Blanchard program contact the Bonner County Extension Office @ 208-263-8511.

To **register** for the Bonnors Ferry program contact the Boundary County Extension Office @ 208-267-3235.

DreamBuilder

DreamBuilder **provides free** online entrepreneurial training in English and Spanish for **future women business owners**.



If you're thinking of **starting your own business** but don't know where to start, this course can **teach you the skills and concepts you need**. Topics such as marketing, bookkeeping and sales. You'll learn about how much it costs to start a business and about the laws and regulations you'll need to follow. By the end of the course, **you'll have a draft business plan**.

Work at your own pace to complete 15 online modules.

Sign up at www.dreambuilder.org/uidaho
REGISTER TODAY!

Contact Paul Lewin with questions at dreambuilder@uidaho.edu.



University of Idaho
Extension
Boundary County

4-H CLOVER TALK JULY/AUGUST 2022



Debbie Higgins
4-H Program Coordinator

July

July TBA-Trailblazers Org. Club Family BBQ & Games @ The Park

July 4-Independence Day Observed Ext. Office Closed



July 8-Port Hill Porkers Swine Meeting 9:00 a.m. @ Fairgrounds Gazebo

July 8-Market Rabbit Weigh-In 5:30 p.m. @ Extension Office

July 9-Sheep Camp 8:00 a.m.-4:00 p.m. @ Fairgrounds

July 12-Livestock & Leaders Meeting 6:30 p.m. Ext. Office

July 13- 4-H Horse Western Clinic

July 14-Camp Clover 8;30 a.m.-2:00 p.m. @ Snow Creek

July TBD-Horse Show-Game Day

July 15-Goat Camp Time TBA @ Fairgrounds

July 18-Family Fun Night Applications Due To Ext. Office

July 20-Family Fun Night Royalty Interviews

July 26-Avian Flu Testing 2:00 p.m.-6:00 p.m. @ Ext. Office Back Parking Lot

July 27- Horse Mock Show @ Fairgrounds

July 28-C.O.O.L./Quality Assurance & Fair Entry Forms Due

August

August 2-Livestock & Leaders Meeting 6:30 p.m. Ext. Office

August 3-Style Revue 6:00 p.m. @ Fairgrounds

August 4-Dirt Bike Skills Competition 5:30 p.m. @ Fairgrounds

August 5-4-H Dog Show 9:00 a.m. @ Fairgrounds

August 5-Idaho 4-H Key Award Applications Due @ Extension Office

August 8-Final-Weigh-Ins-All Animals

August 8-4-H Horse Show Part I 8:00 a.m. @ Fairgrounds

Things are growing, the sun has blessed us with its presence and the waters are warming. This is really the best time of year, until the next season comes, lol.

Carter Country Customer Appreciation BBQ on June 4th was super fun with the 4-H Poultry members & parents helping. As always, everyone had a great time and enjoyed being part of this event.

Boundary County 4-H is sponsoring several Summer Day Camps and Robotics Programs. They are always fun, and don't tell the kids, but learning is involved too! See the flyer and call the office to get on the list as pre-registration is required. Don't hesitate as these will fill up quickly.

We are looking for Family Fun Night Royalty candidates. If you are enrolled in 4-H, and between the ages of 8 to 18 this is for you! You can pick up an application at the Extension Office, find a copy on our Facebook page, or I can email an application to you. Return it by July 18th to the Extension Office, and I will schedule your interview for the afternoon of July 20th.

The calendar is getting full, and fair is getting close, please make sure you know all due dates for paperwork and schedule with your leaders to get your record books signed. Getting all of this completed will enable you to exhibit your hard work at fair. The last day I can print your record book is July 28th, 2022. To do this, hit the submit button at the top right of the record book screen, then it will come to me, and I can print it and have it at the office for you to pick up. After the 28th it is your responsibility to get it printed. Here is a quick reference of dates: FAIR ENTRY & C.O.O.L. forms are due July 28th, swine come to the fair on Sunday, August 7th between


4:00 & 7:00 pm, all other animals come to fair Monday August 8th. Check the fair book for times. All Market Animals will be weighed on Monday the 8th starting with swine at 7:00 am. Livestock shows will begin on Tuesday. Don't forget the fair is a day longer this year!

The week of August 1st through 5th is action packed with fair activities also if you would like to attend. The Livestock Committee & Leaders Council meet on August 2nd at 6:30 pm to finalize details. Open to the public are the Style Revue, August 3rd at 6:00 pm located at Memorial Hall; the Dirt Bike Skills Test is August 4th is in the outdoor arena @ 5:30 pm; the Dog Show is Friday Morning August 5th starting at 9:00 am on the grass by the Gazebo; the Horse Show is Monday August 8th starting at 8:00 am. Come support these 4-H-ers and their hard work.

If you are a 4-H member and need to do a Community Service or need to make up an Organizational Club meeting call the Extension Office at 208.267.3235 and ask for Debbie, I can help you get this requirement fulfilled. Remember you need to attend 50% of the Organizational Club meetings offered and 75% of your project meetings offered to be eligible to exhibit at fair. It is your responsibility to meet these standards, your leader isn't obligated to offer make-up meetings for you. If you need any help with this, call me and we will make a plan.

Good luck to everyone competing and put your best foot forward.

See you at fair!


ATTENTION ALL 4-H LEADERS—Please mark July 12 & August 2 on your calendar! Come to the meetings to stay on top of what is going on in 4-H. Livestock committee meets first at 6:30 p.m. followed by Leaders' council starting at 7:00 p.m. at the Extension Office. All parents, members, and community members are welcome to attend meetings.



Organizational Clubs & Project Meetings

Port Hill Porkers Meetings

All meetings will be held at 9:00 a.m. on Fridays at the room behind the Fair Office. You are required to come to 5 of the meetings to be eligible to sell your pig at the fair.

July 8-@ Fair grounds gazebo

August 5-Meeting will be held at the pig barn, 6:00 p.m.

August 7-Pig drop off. Time to be determined.

August 8-Swine weigh-in @ 7:00 a.m. sharp!

August Continued

August 8-13-Boundary County Fair

August 10-Livestock Judging @ the Fair

August 11-Family Fun Night 6:30 p.m. @ Outdoor Arena

August 12-Buyers Social 5:00 p.m.

August 12-Market Animal Sale 7:00 p.m. Indoor Arena

September

September 1-Thank-you Notes & Blue Sky Form Due To Ext. Office

September 5- Labor Day Observed Ext. Office Closed

September 13-Livestock & Leaders Meeting 6:30 p.m. Ext. Office

Trailblazers Org. Club

Monthly meetings are held at 7:00 p.m. at the Paradise Valley Grange Hall.

July date TBA-family BBQ and games at the park



Trailblazer Club Reports April 15, 2022

On April 15, 2022, the Trailblazer Club members participated in their first community service project of the year. The club met at the Paradise Valley Cemetery at 10:00 a.m. to pick up trash on the road. The club cleaned a 2-mile stretch of the Kootenai Trail Road, dividing it into five sections. Club members picked up approximately 10-15 bags of trash!

Submitted by: Briana Feuerstein, Reporter

May 13, 2022

On Friday, May 13 the Trailblazers Club members cleaned up the Paradise Valley Cemetery. The members met at 5:00 p.m. at the Cemetery to start the clean up. Using rakes and tarps members were able to pick up loose leaves, debris, and trash from around the Cemetery.

Submitted by: Briana Feuerstein, Reporter





Looking for Family Fun Night Royalty!
Applications can be picked up at the Extension Office and need to be turned in by July 18, 2022.

Judging, Interviews and Crowning will take place at the Extension Office July 20, 2022





Did you miss the opportunity to advertise in this year's Fair Book? Do you know someone who has a business or is new to town that would benefit by advertising in the Fair Book?

Please call Boundary County Extension Office to get advertising information for the 2023 Fair Book. If you have questions, would like to sell ads, or advertise please contact the Extension Office at 208-267-3235 and ask for Debbie.



FAIR WEIGH-IN SCHEDULE

Pigs Check in Sunday August 7th,
5:00-9:00 p.m.

Monday, August 8th

Swine: 7:00a.m.-8:00a.m.
Sheep/Goat: 8:30a.m.-9:30a.m.
Beef: 10:00a.m.-11:00a.m.

C.O.O.L. AFFIDAVIT

Found in your Record Book and also on page 20 is the C.O.O.L. Affidavit. 4-H and FFA livestock members must turn this form in along with your fair entry form by July 28 to the Extension Office.

LIVESTOCK RECORD BOOKS

- Must be turned in to Memorial Hall from 2:00p.m.-6:00p.m. on Monday, August 8
- Bill of sale must be in record book-if your animal is home-bred please include a slip indicating that.
- Record books not complete with signatures (member, parent, and project leader) will result in the member not being eligible to sell at the Market Animal Sale.

MINIMUM WEIGHTS & DAYS ON FEED 2022

Market animals not making at least minimum weight may not sell at the Market Animal sale. Minimum weights for the final Fair weigh-in are as follows:

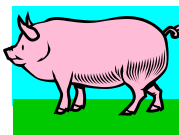
- Steer-** Minimum weight-1,000 lbs.
Days on feed-March 19-August 8 (142)
- Lamb-** Minimum weight-110 lbs.
Days on feed-June 6-August 8 (62)
- Goat** –MinimumWeight-65 lbs.
Days on feed-June 6-August 8 (62)
- Swine-**Minimum weight- 220 lbs. –Maximum weight 300 lbs.
Days on feed-May 14-August 8 (87)

Overweight hogs may be sold but will only receive premiums for the maximum weight allowed. For example a 310 lbs. hog will only sell at 300 lbs.

**WHITE RIBBON ANIMALS
AND/OR WHITE RIBBON RECORD BOOKS WILL NOT SELL**

Primary & Alternate Animals

Do you know which animal you are taking to fair? Please declare your tag numbers on your 4-H Entry Form. You must declare what tag number is coming to the Fair before the final weigh-in. Fair Entry and COOL Forms must be turned in to the Extension Office by July 28. If you have any questions please call 208-267-3235.



Do not forget to bring your paperwork to the weigh-ins

- **BEEF**-HAUL SLIP, BILL OF SALE
- **SWINE**-BILL OF SALE, HEALTH CERTIFICATE (IF PURCHASED OUT OF STATE)
- **LAMB/GOAT**-BILL OF SALE, HEALTH CERTIFICATE (IF PURCHASED OUT OF STATE)
- **RABBIT**-PROOF OF OWNERSHIP OF TWO OR MORE DOES, MUST BRING DOE, LITTER MUST HAVE TREE FRYERS, ALLOWED ALTERNATE PEN OF THREE FRYERS

Market Animal Sale

Friday, August 12, 2022

Sale Time-7:00p.m.

Indoor Arena

Buyer's Social: 5:00p.m. in front of Memorial Hall. An appreciation dinner is provided and served by families and leaders of 4-H and FFA Market Livestock Members. Buyers numbers can be picked-up at the 4-H Office in the Indoor Arena.

Avian Flu Testing will be held on Wednesday, July 26, 2022 between the hours of 2:00 p.m.-6:00 p.m. in the back parking lot of the Extension Office.

Avian Flu Testing is **required** for all 4-H/ FFA and Open Class birds in order to display at the fair.

Displaying waterfowl at the fair is not allowed at this time.

Boundary County Livestock Committee Meeting Minutes

March 8, 2022

The meeting was called to order at 6:35pm
By: Liz Wood

There were 10 members present.

Previous Month's Minutes: Were approved as read.

Treasurers Report: No changes to report.

Officer Reports: No Officer Reports

Committee Reports:

- Horse Committee: The planned sleigh ride was cancelled due to ice. Members played games instead. Next meeting: March 23.

Old Business:

- A. Quality Assurance: Everyone who needs to be signed up for last names starting A-G have signed up, though some were unaccounted for at their scheduled time or have dropped. March 21 @ 5:30pm will be the last date available to meet this requirement.
- B. Two large sporting events are scheduled to happen the same day as Beef weigh in on March 19. No re-schedule of this date is planned.
- C. There is no scheduled Swine weigh in as of this date.
- D. Livestock leaders need to finalize and submit their barn themes for Beef, Goat, Horse, and Rabbit.
- E. Poultry Palace Improvements: A submission was made for requested improvements for 2 separate fundings: 1. Keipper Cooping of Wisconsin for additional new coops to match existing coops in the barn and fill up the larger, now covered area. 2. Supplies from Pro X home center at cost for stands, additional feed cups, and finish products such as paint and hardware to match existing coops and stands. Motion was made to approve all funds, and the motion passed.
- F. Large Animal Wash Rack: Plans are moving forward and quotes/volunteers rounded up.
 - Remove old concrete slab and pour new one to run the full length of wash area.

- Install new plumbing and fixtures, plus drainage for the entire length of slab.
- Add Tie rails of various heights to accommodate different sized animals.
- FFA should have own area within this space to help with muck prevention.
- Cost estimates are running upwards of \$14,000 for materials. All labor will be volunteer.

- G. Swine Barn Improvements: New overhead fans will be installed by Garrett Hull.
- H. Clarification of differentiation between improvements to the barns or fairgrounds that need fair board approval was requested. Any structural changes would need to be approved. All aesthetic improvements such as paint or repairs to current equipment or cages would not need approval.

New Business:

- A. Luke Womachil has signed the contract to be our 2022 Market Sale Auctioneer.
- B. P1FCU is the approved bank for the 2022 Market Sale.
- C. Buyers Social: A new coordinator needs to be found. A small group of dedicated parents led by an experienced market animal leader was discussed and will be pursued.
- D. North 40 kids program cards are available to pick up at the Extension office; to be used for discounts on market feed only.

There was no other business.

A motion was made to adjourn the meeting by Maureen at 7:08pm. It was seconded by Tammy.

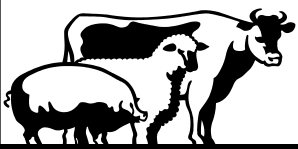
Next meeting: April 12, 2022 at 6:30 p.m., Extension Office.

Submitted by: Amy Tye

Members Present:

- Maureen Mai
- Liz Wood
- Tammy Hedrick
- Jess Miller
- Teresa Smith
- Leah Sandelin
- Debbie Higgins
- Amy Tye
- Julia Stuber
- Cheyenne Hooper

Animal Care During Fair



This is a reminder to **all** animal project members (beef, sheep, swine, horse, dairy, goat, rabbit, poultry).

There will be a \$50.00 penalty assessed for each incident of non-compliance of the fair rules regarding feeding and cleaning of stalls.

Feeding and stall cleaning should be completed by 9:00a.m. and 8:00p.m. Fees will be deducted from sale checks if you are in a market animal project. All other animal project members must pay the fee. If fee is not paid, members will be ineligible to take an animal project in the future until debt is paid in full.

Style Revue

The Style Revue will be held on Wednesday, August 3rd. Practice starts at 5:30 p.m. and judging will start at 6:00 p.m. Come see our 4-H seamstresses put their best foot forward during the Style Revue which will be held at Memorial Hall located at the Fairgrounds.



If you have any questions please call your clothing leader or the Extension Office at 208-267-3235.

Boundary County Leaders Council Meeting Minutes

March 8, 2022

The meeting was called to order at 7:08pm
By: Maureen Mai

There were 9 members present.

Previous Month's Minutes: Small changes made, then approved.

Treasurers Report: No changes to report.

Officer Reports:

- Fair Board: New cameras are being installed around the fairgrounds. A recent break-in and theft of a fridge from the food court kitchen facilitated this. Anyone using this facility is asked to please be extra diligent about locking up when you leave to prevent further break-ins in the future.

Committee Reports:

- Awards Committee Meeting will be April 12 @ 5:30pm.
- Family Fun Night: Fair book flyer is being completed by Debbie. Mutton Busting would like to be featured again, but the cost of the sheep might be prohibitive. Options for other entertainment was discussed. Final events schedule needs to be submitted at next month's meeting.

Old Business:

- A. Fair Book Ads: Still waiting on some ads for approval and submission. 43 are processed and done. Estimated 60+ ads will be featured in the fair book this year.

- B. All leaders need to sign up on zsuites if they have not already done so.
- C. Oral Presentation day will be April 25 @ 4:30pm at the Extension Office. All 4-H and FFA members are highly encouraged to participate!
- D. Reminder for teens ages 15 and up by the first of the year to apply for fair royalty. Applications due May 23.
- E. March 15 is the last day to add projects.

Members Present:

- Maureen Mai
- Liz Wood
- Tammy Hedrick
- Jess Miller
- Teresa Smith
- Leah Sandelin
- Debbie Higgins
- Amy Tye
- Cheyenne Hooper

New Business:

- A. Distinguished Service Award nominations are being sought for Outstanding Leader. Some names were discussed— Sharon Comer being a front runner.
- B. Noah Nichols was not able to present his scheduled KYG presentation and has been rescheduled for next months meeting.

There was no other business.

A motion was made to adjourn the meeting by: Liz Wood at 7:26pm. The motion was seconded by Tammy and the motion passed.

Next meeting: April 12, 2022 at 6:30 p.m., Extension Office.

Submitted by: Amy Tye

Project Requirements

Please remember that project requirements and exhibit standards are fully described in project materials. All leaders have received copies of these requirements. If you take the time to review the project and exhibit requirements at the beginning of a project that helps eliminate a lot of problems when a project is submitted for the Fair.

Remember:

- All projects have a record book
- All record books must include a story-(project focused)
- Photographs are required in Boundary County
- All projects require an oral presentation
- All projects have an exhibit standard

Leaders if you have questions about the exhibit standards or project requirements please contact Debbie at the Extension Office, 208-267-3235.

Completion Requirements

We would like to remind everyone that members must attend a minimum of 50% of the organizational meetings. A majority of the clubs meet once a month up to fair time. This provides ample time to fulfill the completion requirements. Members must also participate in at least one community service activity, attend 75% of their project meetings, give an oral presentation, and exhibit their completed project. Please remember that members must complete an oral presentation and complete a record book for each project that they take. The easiest way to ensure that you are meeting your project requirements is to simply ask your organizational or project leaders if you are in good standing. It is the member's responsibility to communicate to the leader if you are going to miss meetings etc. Keeping those lines of communication open will help avoid issues later in the year.

If you have additional questions about completion requirements do not hesitate to call the Extension Office at 208-267-3235.

Boundary County Livestock Committee Meeting Minutes

April 12, 2022

The meeting was called to order at 6:36pm
By: Liz Wood

There were 14 members present.

Officer Reports:

- Secretary : Previous Month's Minutes: some changes made, then approved.
- Treasurer: New account balance was read. A motion was made to transfer some funds from existing accounts to start a new Livestock account at P1FCU with a starting balance of \$1000. The motion was seconded and the motion passed.

Committee Report: No committee Reports.

Old Business:

- A.** Swine weigh in plans are as follows:
- Weigh Master: Gabby
 - Photos: Adetta
 - Paperwork: Leah/Brandy
 - Tagger: Ron
 - Set up on 5/13 @ 4:00pm
 - Weigh in May 14, 7:00am
- B.** Rabbit and Horse have not yet committed to a barn theme. FFA, Beef, Sheep, Swine, Poultry, and Goat all have committed themes.
- C.** Poultry Barn Improvements: New cages have arrived and all supplies to build new stands and improve upon existing equipment has been purchased. All are currently being stored in the Rabbit barn until the weather improves to start work.
- D.** Large Animal Wash Rack: Professional help and a general contractor will need to be secured for this project and bids/

pricing are being pursued. The city needs to be contacted to secure locations of existing sewer and pipelines before work can begin.

- E.** Swine Barn Improvements: No new developments at this time.
- F.** A motion was made to reimburse Liz Wood for her contribution of donuts and coffee at the beef weigh in. The motion was seconded and the motion passed.

New Business:

- A.** All Barn Superintendent positions have been accounted for and phone numbers verified.
- B.** June 14 at 6:00pm has been set to lift and thoroughly clean the livestock scales.
- C.** The 2022 Large animal fair judge will be Jan Busboom.

Other Business:

- A.** Liz Wood will supply 3 ear tag applicators for the swine weigh in so new ones do not have to be purchased this year.

A motion was made to adjourn the meeting: by Tammy Hedrick at 7:01pm. It was seconded by Jaycee Atkins and the motion passed.

Next meeting: May 8, 2022 @ 6:30pm—U of I Extension Office.

Submitted by: Amy Tye

Members Present:

- Jaycee Atkins
- Jessica Miller
- Julie Smith
- Vicky McBride
- Jenna Magee
- Tammy Hedrick
- Leah Sandelin
- Will Hedrick
- Renee Murphy
- Debbie Higgins
- Morgan Tye
- Amy Tye
- Liz Wood
- Sarah Carver

Livestock Judges Preferences

Making their animal look its best is for sure the most important thing. I do ask questions because I expect them to know something about raising an animal. They should be able to keep their pigs on the move slowly and under control and be able to take their pig where they want it to go. In other words they should show their pig not just follow it around the ring.

For cattle they can set steers in the profile for the side view (rear leg on judges side a bit further back) but setting square is ok too just be consistent. In side by side or rear view I like the steers set square. In sheep and goat I like them set square in side and rear view.

I would like to have a chance to talk to exhibitors to go over these items and answer any questions they have. Best to do this separately for each species.

Jan Busboom

Boundary County Leaders Council Meeting Minutes

April 12, 2022

The meeting was called to order at 7:02pm
By: Liz Wood

There were 19 members present.

KYG delegates Morgan Tye and Noah Nichols both presented their experience at the KYG conference, and thanked the Leaders Council for the scholarships that allowed their participation.

Officer reports:

- Secretary: Previous month's minutes were approved as read.
- Treasurer: Current Balance was read; no changes to report.
- Fair Board: Another break in was reported at the fairgrounds. FFA Barn & Men's bathroom were broken into with mild vandalism. The Parks and Rec ball field was torn up by trucks spinning donuts on the grass. Some leads as to who the perpetrators might be have come to light, and security cameras are on their way and will be installed asap.

Committee Reports:

- Awards Committee: Letters and mailing labels are done; just need envelopes and stamps to complete the job.
- Family Fun Night: 75-100 chickens are being raised plus some ducks for the ever popular Chicken and Duck Scramble. Goats have been donated to 4-H with the plan to use them in the new event—Goat Roping.

Old Business:

- A. Oral Presentation Contest will be April 25 at 4:30pm at the Extension Office.
- B. DSA nominee Sharon Comer has declined the nomination, but efforts (and possibly bribes) will be made to try and entice her into the position.

New Business:

- A. 4-H Sponsored summer camps are a good way to make up for missed organizational or club meetings. Contact Debbie at the Extension office for details.
- B. Volunteer Judges for the Oral Presentation contest are needed. Renee Murphy and Amy Tye agreed to help out with this.
- C. An AmeriCorps Volunteer is needed for a summer internship. Contact Amy Robertson at the Extension office for more information on this scholarship opportunity.
- D. Carter Country Customer Appreciation Day is June 3 & 4. Any and all 4-H'ers willing and able to help out are highly encouraged to do so. The 4-H Poultry group is signed up to help all day on the 4 with the BBQ and in the store.

Members Present:

- Jaycee Atkins
- Jessica Miller
- Julie Smith
- Vicky McBride
- Jenna Magee
- Tammy Hedrick
- Leah Sandelin
- Will Hedrick
- Renee Murphy
- Debbie Higgins
- Morgan Tye
- Amy Tye
- Liz Wood
- Sarah Carver
- Noah Nichols
- Nichols Family (3 members)

Other Business:

- A. A request was made by Debbie Higgins to purchase the sashes and crowns for Family Fun Night Royalty. A motion was made by Liz and Seconded by Renee; the motion passed.
- B. Sarah Carver requested permission to purchase a new computer drive for the Treasurer's computer. Permission was granted by unanimous vote.

A motion was made to adjourn the meeting by: Tammy Hedrick at 7:54pm. It was seconded by Liz Wood and the motion passed.

Next meeting: May 10, 2022 at 7:00 p.m., Extension Office.

Submitted by: Amy Tye

Herdsmanship Contests

This is a reminder to our 4-H Herdsman that the **Barn Herdsmanship contest** is held daily! Each of the animal barns (Beef, Sheep, Swine, Horse, Rabbit, Goat, Poultry) are eligible to participate. A traveling banner is awarded to the barn with the highest score in the following categories: Animal Care, Barn and Stall, Tidiness, Decorations/Educational Displays, and Exhibitor Attitude. Judges will also identify 4-H members in each animal category who deserve the **Individual Herdsman Awards**. Last year's barns looked fantastic, and we received a lot of positive comments from the judges. Keep up the great work and good luck contestants! If you are interested in being a Barn Herdsmanship judge please call the Extension Office at 208-267-3235. Individual Herdsmanship nomination forms are available at the 4-H Fair Office & due to the 4-H Fair Office by 3:00 pm, Saturday, August 14.

Judging Criteria

- ❖ Livestock should be well groomed, properly secured, fed, and watered.

- ❖ EXHIBITORS are to feed, water, and care for their animals.

Stalls & Barns

- ❖ Stalls and barns should be clean, dust-controlled, and swept. Manure should be removed and properly disposed of. Fresh bedding should be added to stalls on a regular basis. Stall cards should be complete, neat, and legible.

Decorations & Educational Displays

- ❖ Educational displays should provide information about 4-H and educate the general public about the species. Decorations should incorporate the fair theme and 4-H emblem and colors.

Exhibitor Attitude

- ❖ 4-H exhibitors should be courteous and helpful to the public, 4-H leaders and staff, Fair Board members, and other competitors. They should have a neat appearance and show pride in their projects.



Sportsmanship

"Keep your head when you win and your heart when you lose."

Sometimes leaders, members, or parents disagree with a judge's decision. It is important to try to be fair and reasonable in these instances. Keep in mind judging is not like scientific testing. Even experts disagree and standards change as research helps us get improved practices and products.

- ~ Play fair
- ~ Respect others' rights to their opinions
- ~ Keep an open mind
- ~ Be willing to try again

We have high standards for 4-H/FFA products and exhibits. As you take part in exhibiting your project, work for high standards in how you get along with others.

Interview Judging

All interview judging will take place on Tuesday, August 9th in Memorial Hall. The following projects require interview judging:



- Leadership/Teen Leader
- Club Officers (If record book is submitted)
- Speech/Public Speaking
- Vet Science
- KYG

It is the member's responsibility to sign up for an interview when record books are turned in on Monday, August 8th. Please be mindful of showing times etc. to avoid conflicts in scheduling.

4-H Fair Entry Forms

All 4-H projects and FFA Market Animal projects must complete a 4-H Fair Entry Form. **THIS FORM CAN NOT BE USED FOR OPEN CLASS EXHIBITS!!!** The 4-H Entry Form was inserted in the back of each projects' record book, is available on zsuites, or picked up at the Extension Office. Only one form is required per member. Members must list what projects they will be bringing to fair. If you have a market animal project the tag number of the animal you are bringing must be written down. **Entry Forms and COOL Forms must be completed and returned to the Extension Office by Thursday, July 28, 2022.** The Entry Form will be used for the check-in and check-out of projects at Memorial Hall. If you have any questions or need additional information please call the Extension Office at 208-267-3235.

NOTICE

4-H ENROLLMENTS WILL OPEN OCTOBER 10, 2022. THE PARTICIPATION DEADLINE FOR 2022/2023 IS JANUARY 10, 2023 for the 4-H projects to be part of the 2023 Boundary County Fair.

PLEASE STAY TUNED FOR THE SEPT/OCT CLOVERTALK.

There will be special dates for livestock participation. The Awards Ceremony & Kick-Off Carnival night will be held on October 27, 2022 at the Fairgrounds starting at 6:00 p.m. Mark this date on your calendars.



Community Pride

There are five Organizational clubs serving Boundary County 4-H. We know that you all put a lot of hard work and time in to your community pride projects. However, we have only seen two or three community pride posters at Fair. Unless folks live in an area, many do not realize the amount of time and hard work 4-H gives back to the community. We are urging all organizational clubs to submit community pride posters at fair. What should be on your poster? Your poster can show the process of doing the activity. Community pride posters are due on Monday, August 8 and can be turned in from 2:00-6:00pm at Memorial Hall. If you have questions call the Extension Office.

June Robotics Programs



Cost: FREE Pre-registration is Required: Call 208-267-3235
All Classes will be held at the Boundary County Extension Office



AGES 5-6

Robotic Mice: Mon, June 13 3:30pm—4:15pm
Dash & Dot: Mon, June 20 3:30 pm—4:30 pm
Robotic Mice: Mon, June 27 2:30pm—3:15pm
Scratch Jr. Programming: Wed, June 29 2:30pm—3:30pm

AGES 7-9

Scratch Programming: Tues, June 14 3:00 pm—4:00 pm
Lego Essential: Thurs, June 16 12:30pm—1:30pm
Dash & Dot: Mon, June 20 1:00pm—2:00pm
Dash & Dot: Wed, June 29 1:00pm—2:00pm

AGES 10-11

Dash & Dot: Mon, June 13 2:00 pm—3:00 pm
Scratch Programming: Thurs, June 16 2:00pm—3:00pm
Lego Challenge: Tues, June 21 1:00pm—2:30pm
Dash & Dot: Mon, June 27 3:30pm—4:30pm
Lego Free Play: Tues, June 28 3:00pm—4:00pm

AGES 12-13

Lego Challenge: Tues, June 14 1:00 pm—2:30 pm
Scratch Programming: Mon, June 20 2:15pm—3:15pm
Dash & Dot: Mon, June 27 1:00pm—2:00pm
Lego Free Play: Tues, June 28 1:00pm—2:30pm



6447 Kootenai Street Bonners Ferry, ID 208-267-3235



July Robotics Programs



Cost: FREE Pre-registration is Required: Call 208-267-3235
All Classes will be held at the Boundary County Extension Office



AGES 5-7

Kibo: Mon, July 11 9:00am—10:00am
Robot Mouse: Wed, July 13 10:15am—10:45am
Robot Mouse: Thurs, July 21 12:30pm—1:00pm
Dash & Dot: Thurs, July 21 1:15pm—2:15pm
Kibo: Thurs, July 28 12:30pm—1:30pm

AGES 8-9

Dash & Dot: Wed, July 13 9:00am—10:00am
Lego Essential: Wed, July 20 10:30am-11:30pm
Dash & Dot, Wed, July 27 1:00pm—2:00pm
Lego Essential: Wed, July 27 2:15pm—3:15pm

AGES 10-13

Lego Spike Prime: Mon, July 11 10:30am—11:30pm
Dash & Dot: Wed, July 20 9:00am—10:00am
Lego Spike Prime: Thurs, July 21 11:00am—12:00pm
Dash & Dot: Thurs, July 28 1:45pm—2:45pm



6447 Kootenai Street Bonners Ferry, ID 208-267-3235



Follow Boundary County 4-H on Facebook:
www.facebook.com/boundarycounty4h

August Robotics Programs



Cost: FREE Pre-registration is Required: Call 208-267-3235
All Classes will be held at the Boundary County Extension Office



AGES 5-7

Dash & Dot: Mon, August 1 2:15pm—3:15pm
Robot Mouse: Tues, August 2 2:15pm—2:45pm
Kibo: Mon, August 15 1:15pm—2:15pm
Dash & Dot: Mon, August 22 3:30pm—4:30pm
Kibo: Wed, August 24 10:15am—11:15am

AGES 8-9

Lego Essential: Tues, August 2 1:00pm—2:00pm
Lego Essential: Mon, August 15 2:30pm—3:30pm
Dash & Dot: Wed, August 17 10:15am—11:15am
Lego Essential: Mon, August 22 1:00pm—2:00pm
Dash & Dot: Wed, August 24 9:00am—10:00am

AGES 10-13

Dash & Dot: Mon, August 1 1:00pm-2:00pm
Lego Spike Prime: Tues, August 2 3:00pm—4:00pm
Lego Spike Prime: Wed, August 17 9:00am—10:00am
Dash & Dot: Mon, August 22 2:15pm—3:15pm



University of Idaho
Extension



6447 Kootenai Street Bonners Ferry, ID
208-267-3235



**PRE-REGISTRATION IS REQUIRED; 208-267-3235
PAYMENT DUE TWO DAYS BEFORE CAMP
SPACE IS LIMITED**

These day camps are being put on by Boundary County 4-H. If you have any questions or want more information, please contact Debbie Higgins or Amy Robertson at the Boundary County Extension Office, 208-267-3235.

Youth Farm Tour

(\$15)
Ages 8-14
June 29 @ 9am-4 pm
Boundary County
Fairgrounds

Nature Camp

(\$15)
Ages 8-12
July 7 @ 9am-3pm
Kootenai National Wildlife
Refuge

Art Camp

(\$15)
Ages 8-12
July 19 @ 9am-3pm
Boundary County
Fairgrounds

"Crafter-noon"

(\$5)
Ages 8-14
July 25 & August 24
@ 1pm-4pm
Boundary County Extension
Office



The University of Idaho does not discriminate in education or employment on the basis of human differences, as required by state and federal laws. Persons with disabilities who require alternative means for communication or program information or reasonable accommodations need to contact Amy Robertson one week before the starting date of the program at 208-267-3235 or amrobertson@uidaho.edu.



**Follow Boundary County 4-H
on Facebook:
[www.facebook.com/
boundarycounty4h](http://www.facebook.com/boundarycounty4h)**



If you are moving or have a change of address-
please let us know. 208-267-3235



Panhandle 4-H Market Animal Quality Assurance Program

The Panhandle 4-H program is committed to teaching youth proper management skills that help ensure the production of a safe, wholesome food product. The following checklist has been developed to assist youth in managing their animal(s) properly. While this checklist cannot cover every situation, it highlights some of the more common mistakes young producers might make.

You are responsible to ensure that: (place a check mark in front of each item you have done)

- ___ All medicated feeds or feed additives were discontinued the required number of days prior to slaughter, as stated on the label.
- ___ No feed containing mammalian meat and/or bone meal was fed at any time.
- ___ Withdrawal times for any medications, wormers, etc. were followed.
- ___ No product was utilized in raising or exhibiting this animal that was not specifically labeled for use with this species; approved products were only used according to the manufacturer's label directions.

Quality Assurance / Country of Origin Labeling (COOL) Affidavit

As a producer of a market animal ultimately intended for human consumption, I understand that I am responsible to ensure the animal(s) I raise are managed in a safe and wholesome manner. By offering this animal for sale, I guarantee that all applicable laws have been followed to ensure a wholesome product for human use.

Member's Name: _____

Address: _____

City: _____ State: _____ Zip: _____

Telephone: _____

Species (circle one): Beef Goat Sheep Swine

Animal's Ear Tag/Identification Number: _____

I certify that as the owner of this animal, it was not fed any "prohibited" mammalian meat and/or bone meal (per FDA regulation CFR Title 21), and this animal is free from drug and chemical residues.

COOL: As an affidavit is deemed by USDA as an official record of Country of Origin, I attest through first-hand knowledge, normal business records, or producer affidavit(s) that this animal was born in (list country) _____ and raised in (list country) _____.

Member's Signature: _____ Date: _____

Parent's Signature: _____ Date: _____



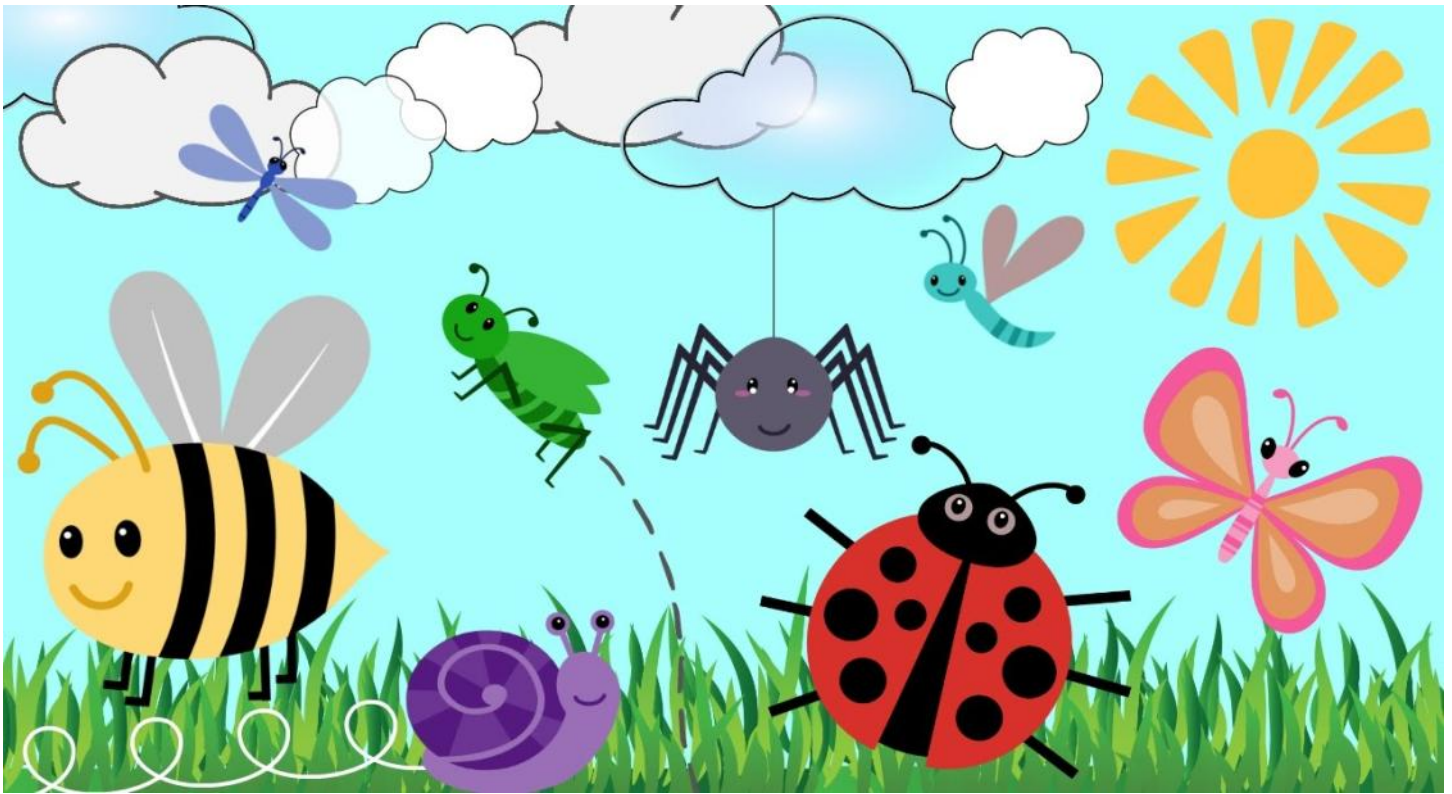
BOUNDARY COUNTY 4-H PRESENTS

CAMP CLOVER 2022

THURSDAY, JULY 14TH



Camp Clover is an action packed day camp open to ALL youth ages 5-9. Participants must be pre-registered by July 13th, 2022



BUGS! BUGS! BUGS!

CONTACT BOUNDARY COUNTY EXTENSION OFFICE TO REGISTER 208-267-3235

- **COST:** Free!
- **WHERE:** Snow Creek Pond, on Lions Den Rd
- **ARRIVE:** 8:45 a.m.
- **WHAT TO WEAR:** Play clothes, since it is outdoors be prepared for inclement or hot weather
- **SCHEDULE:** 8:45-9:00 a.m. Sign-in 9:00-9:15 a.m. Orientation
- **Morning stations 9:30-11:45 a.m. Lunch 11:45 a.m.-12:15 p.m. Afternoon stations 12:30-2:00 p.m.**
- **Parents pick up 2:00 p.m.**



The University of Idaho provides equal opportunity in education and employment on the basis of race, color, religion, national origin, gender, age, disability, or status as a Vietnam-era veteran, as required by state and federal laws. Anyone attending programs highlighted in this document that requires auxiliary aids or services should contact Boundary County Extension Office at P. O. Box 267, Bonners Ferry, ID 83805, or by calling 208-267-3235, or via email at boundary@uidaho.edu at least two weeks prior to the event.



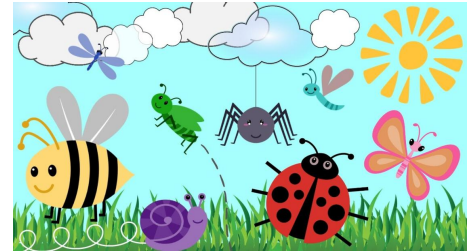
CAMP CLOVER '22

BUGS! BUGS! BUGS!

Camp Clover is an action packed day camp open to ALL youth ages 5-9.
Participants must be pre-registered by July 13, 2022

- **Parents** - If you are planning to spend the day with us, we can use your help!! Please indicate if you are staying on the registration form
- **What to wear:** Play clothes, since it is outdoors be prepared for inclement or hot weather
- **Beverages, snacks will be provided.**
- **Where & When:** Thursday, July 14, 2022 at Snow Creek Pond, Lions Den Rd.
- **Schedule:**

8:45 a.m. - 9:00	Sign-in
9:00-9:15	Orientation
9:30-11:45	Morning stations
11:45-12:15	Lunch
12:30-2:00	Afternoon stations
2:00 p.m.	Parents pick up



University of Idaho
Extension

The University of Idaho provides equal opportunity in education and employment on the basis of race, color, religion, national origin, gender, age, disability, or status as a Vietnam-era veteran, as required by state and federal laws. Anyone attending programs highlighted in this document that requires auxiliary aids or services should contact Boundary County Extension Office at P.O. Box 267, Bonners Ferry, ID 83805, or by calling 208.267.3235, or via email at boundary@uidaho.edu at least

Complete and return registration form to the Boundary County Extension Office by

Will you be staying with your child during the day? Y/N _____ I am willing to help _____

Name of child: _____ Age: _____

Address: _____

Phone: _____ Alternate Phone: _____

Emergency Contact (Name & Phone) _____

Physician (Name/Phone) _____ Allergies/Reactions child has _____

I, _____, understand that this 4-H activity will be supervised by
 (parent name - printed please)

Authorized representatives in the 4-H program and that, if a serious illness or injury occurs, medical and/or hospital care will be given. However, the State of Idaho, Regents of the University of Idaho, The University of Idaho Extension faculty and their respective agents, servants, employees, and volunteers (collectively, referred to as Releases') are not responsible in case of accidental injury or illness. I further agree to hold harmless, indemnify, and defend all above named Releases' from and against all claims, demands or suits that my child may have. I understand, in case of a medical emergency, I will be notified. In the event I cannot be reached, I hereby give permission to the attending physician to hospitalize, secure proper treatment for, and order injection, anesthesia, or surgery for my child as named above on this Health Certificate and do solemnly swear that the information set for in this Health Certificate is true and correct to the best of my knowledge and belief.

Signature, Parent or Legal Guardian

Date

CAMP CLOVER
'22

4-H Friday



Another year of 4-H Friday Friends is in the books! In May we had Ms. Debbie come and plant marigold seeds with the kids that they got to take home. In June we had Ms. Amy come in on the third and talk to the kids about healthy drinks and they made fruit smoothies. Then on our last Friday, June 10th, Master Gardener Shirley Anderson came and taught the students about insects.

Ms. Teri from the library came and did story time every other Friday. In the last few weeks Friday Friends did a lot of fun activities, from crafts such as binary necklaces to science activities, like learning about pollination and how bees make honey and other things in between.

4-H Friday Friends will be starting the 2022-2023 year the Friday of the first week of school in September. Have a great summer and we hope to see you in the fall!

C.O.O.L.

IMPORTANT INFORMATION FOR ALL MARKET ANIMAL MEMBERS AND LEADERS!

As part of the Farm Bill, effective September 30, 2008; individuals who are selling whole muscle retail cuts of meat are required to identify where that animal was born and raised. This labeling is known as Country of Origin Labeling or C.O.O.L.

So what does this mean to you as a livestock member? As a producer of a meat animal you will be required to keep records regarding the country the animals you sell were born and raised in. If you are purchasing animals for your 4-H project you will need this information at the time of purchase. This information must be kept in your records for 1 year **after** the sale of the animal.

The C.O.O.L. form should be in your record book. The form covers the requirements for our market animal sale, and it is important you can provide the information on your animal(s). It is important that you use a good bill of sale and ask the producer questions when you go to purchase your animals(s). C.O.O.L. forms must be turned in with your Fair Entry form by July 28.

If you have any questions regarding C.O.O.L. please contact Debbie at the Extension Office.

Thank You Notes & Blue Sky

Boundary County does a wonderful job supporting our 4-H and FFA programs. It is essential for us to recognize and show appreciation to our award donors and buyers through Thank You cards.



Thank you cards should include:

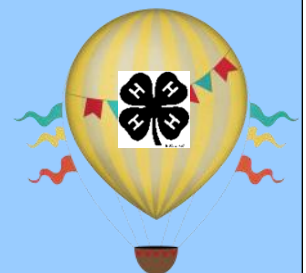
- Who you are and something about yourself.
- What projects you took to the Fair.
- Why you enjoy the project(s) you took.
- The cards should be addressed to the award donor and/or buyer, have a return address and sufficient postage on the envelope.
- The Blue Sky Form is not judged. Keep it in your Record Book & it should be turned in with your Record Book at Fair.
- **DO NOT mail the thank you cards. Please turn them in with your completed Blue Sky to the Extension Office after the Fair by September 1.** Timeliness is of the utmost importance.

Thank you cards will be available at the 4-H Fair Office and the Boundary County Extension Office. Please call 208-267-3235 if you have questions.



Boundary County Fair August 8-13, 2022

AROUND THE WORLD IN 5 DAYS!



4-H/FFA Livestock Rules and Regulations

1. Weigh-In

- a. 4-H & FFA FAIR ENTRY AND C.O.O.L./QUALITY ASSURANCE FORMS DUE TO THE EXTENSION OFFICE JULY 28
- b. Animals that are diseased or contaminated with pests will not be weighed in, they will be sent home immediately and not be allowed to sell. Final decision lies with the Veterinarian and the Market Animal Sale Committee.
- c. No wet lambs will be weighed-in.
- d. Minimum weights at Fair weigh-in for this year are: Rabbit-3-5.5 lbs
Steer-1,000 lbs
Lamb-110 lbs
Goat-65 lbs
Swine-220 lbs min.-300 lbs. max
Overweight hogs may be sold but will only receive premiums for the max. weight allowed (i.e. 310 lb. hog will only sell at 300 lbs.).
- e. If a market swine exceeds 300 pounds it will become ineligible to receive Grand or Reserve Champion Quality and top rate of gain. A Market Swine can not be born before January 1 of the current 4-H year.
- f. Market animals not making at least minimum weight may not sell at the Market Animal Sale or on the Boundary County Fairgrounds Property.
- g. Once an animal is checked-in/weighed-in for Fair it is to remain on display through the duration of the Fair. Any early removal of an exhibit from Fair will result in the inability to enroll in 4-H or exhibit at the Fair the following year. Also all premiums, awards, and auction proceeds resulting from that project will be forfeit. Fair exhibits may only be removed prior to check out time if permission is given by the 4-H Coordinator or 4-H Extension Educator. All underweight and breeding animals must be removed on Saturday night.
- h. Market animals will only be weighed ONE time. First weight is final.

2. Project Completion/Eligibility for Sale

- a. 4-H and FFA Market Animals are eligible for market sale if they meet all Fair General Rules and Livestock Rules.
- b. The Market Animal Sale will be limited to 4-H and FFA members only.
- c. To complete a 4-H Market Animal Project the member and animal must exhibit in both quality and fitting & showing classes. Exceptions will be made only by the Livestock 4-H/FFA Committee.
- d. An exhibitor may sell only one market animal at the Market Animal Sale.
- e. 4-H and FFA members must show a completed project, which includes record book fully completed and signed by the "certified project leader". Record books must be finished by 6:00 p.m., Monday, August 8, 2022 or member will not be eligible to sell their animal in the Market Animal Sale.
- f. White Ribbon Beef, Poultry, Rabbit, Sheep, Goats, and Swine, will not be sold at the Market Animal Sale.

3. Showing Rules

- a. Pens of sheep and swine must be preceded by a breeding project the previous year.
- b. All female cattle shown at the fair will be Bangs tested as per Idaho Dept. of Agriculture Code #25-613A.

- c. All fitting of livestock, in preparation for fitting & showing contests, must be done by the exhibitors with assistance or guidance of a parent or leader as needed, for safety. Failure to comply may be cause for disqualification.
- d. No horns on market animals. Beef may have scurs less than 2 inches. Horns will be allowed on dairy and breeding animals, except dairy goats.
- e. Any goats entered at the Boundary County Fair need to be dehorned or disbudded. The only exception will be Angora Goats, also known as "Fiber Goats".
- f. Proper and timely feeding and care must be given to all animals THROUGHOUT THE ENTIRE FAIR. Members are required to clean their own pens/stalls. If a scheduling conflict arises, it is the member's responsibility to find another member to assist in completing stall cleaning and feeding for their animal (s). Cleaning stalls and feeding animals must be completed before 9:00am and must be completed again no later than 8:00pm. If an animal(s) pen is excessively dirty throughout the day, extra attention may need to be given in order to maintain a healthy living environment for that animal. A written warning will be given for the first incident. A \$50 penalty will be assessed for each additional incident. Market animal projects will have the fee(s) deducted from their Market Animal Sale Check. All other animal projects must pay the fee(s), if assessed, or they will be ineligible to take an animal project in the future, until the debt is paid in full.
- g. Do not arrive to animal barns until 9:00 a.m. on Sunday. Stall cleaning and 4-H project check-out is from 9:00 a.m.-11:00 a.m. unless prior arrangements have been made with barn superintendents. A \$50.00 fee will be assessed if stalls are not cleaned by 11:00 a.m.
- h. All lambs must have liftable tails (determined by utilizing county device). If a lamb prolapses' at home it may not be brought to the Boundary County Fair. If a lamb proleapses' at the Fair it must be taken home immediately and may not sell if market animal.
- i. 4-H & FFA members must be in compliance with industry approved animal care and management practices. 4-H/FFA animals that have been altered in an "unapproved" manner (such as clipping teats to render them reproductively unsound) will result in disqualification from the 4-H/FFA livestock program and the member will be barred from all future participation.

4. Sale

- a. Members will be charged two percent (2%), plus: Beef-\$19, Swine-\$11, Sheep-\$10, Goat-\$10, Poultry-\$3 and Rabbits-\$3 to pay for printing, auction, hauling, photos, and other expenses. Sale weight will be calculated as follows: final weight minus 1 % for beef, swine, sheep, and goat.
- b. See Livestock Rules and Regulations in the Fairbook for further pertinent information.

Boundary County 4-H/FFA Event Dress Code

This dress code has been developed to ensure that participants and spectators are not offended or uncomfortable during 4-H/FFA events and activities. As the Idaho State 4-H Family Handbook, and the FFA Code of Ethics states, members should be their own best 'exhibit'. This includes their personal manners, attitudes, and courtesy, as well as appropriate dress and physical appearance. If you choose to dress inappropriately, you will be asked to change or leave the event until proper dress is obtained. Please dress responsibly to ensure that you contribute to a pleasant 4-H/FFA atmosphere.

As a rule, a 4-H/FFA member's clothing should be neat, clean, modest, acceptable in repair and appearance, and be in good taste and decency as appropriate for the specific event. The member is a representative of 4-H/FFA programs, and their appearance should reflect professionalism.

Examples of prohibited dress or appearance include but are not limited to:

- Bare midriff shirts
- Exposed undergarments
- Excessively short or tight garments, including spankx, tube tops, and short shorts
- Shirts with less than a 1-inch strap, including strapless and one-shoulder tops
- Shirts that reveal navel, back below the shoulder blades or cleavage
- Attire with messages or illustrations that are vulgar, indecent or advertise any product or services not permitted by law to minors
- Any adornment such as chains or spikes that could be perceived as a weapon
- Any symbols or styles associated with gangs or intimidation

Livestock Exhibitor Dress Guidelines

These guidelines for show dress must be observed whenever exhibitors are in the show ring and during the Market Animal Sale. A shirt or blouse must be worn. It may be sleeveless, short sleeved or long sleeved, but must have a collar. If the shirt has buttons it must be buttoned to the collar bone. Full Length slacks, pants, or jeans are appropriate. "Grubby", holey or tight worn out jeans as well as excessively baggy pants are not acceptable. Hard soled boots or laced tennis shoes must be worn to meet safety standards. NO sandals, flip flops, or heels more than 1½ inches high. Western hats are appropriate unless otherwise noted by the judge. NO baseball caps. All Dairy projects, (goats, cows, etc.) members must wear white pants and white shirts. 4-H club shirts, vests or jackets must have collars and shirttails must be tucked in. Decorating of exhibitors or animals by means of costume, signs, glitter, body paint, etc. WILL NOT be tolerated at any time while competing or during the Market Animal Sale.

Note: *Please take pride in your personal appearance, represent yourself respectfully to support the group you are associated with. *Fair Royalty & Family Fun Night Royalty (4-H & FFA) will NOT wear sashes or tiaras while competing. They may be worn during the Market Animal Sale.

If during any 4-H/FFA event you are asked to change by a Leader or Advisor, please do not argue and comply as asked. If you think you have been asked unfairly, please change for the time being and follow the guidelines for filing a complaint to the Leader's council and Livestock committees to be dealt with in a reasonable manner as the 4-H Code of Conduct states.

4-H Memorial Hall Exhibit Rules

4-H Memorial Hall exhibits must be checked into the Fair between 2 p.m. and 6 p.m. Monday, August 8, 2022

1. **4-H FAIR ENTRY FORMS DUE TO THE EXTENSION OFFICE JULY 28**
2. **PICK UP EXHIBIT CARDS AT THE EXTENSION OFFICE AFTER AUGUST 1**
3. **POSTER SIZE FOR ALL POSTERS IS 14 X 22** (exception of Advanced Archery Posters & Community Pride Posters)
4. **Each item within a project must be labeled with an exhibit card**

Clothing

- a. Safety-pinned to garments (waistband for skirts or pants, on hem of sleeves for tops). No straight pins please!
- b. Display commercial pattern guide sheets or copy if shared with record book. Label each page with member's name.
- c. Clothing articles that have been worn or become soiled should be laundered before exhibiting.
- d. Clothing projects modeled at the Style Revue must be displayed at the fair.

Knitting/Crochet

- a. Attach exhibit card to each item (exhibits of more than one item should be attached together and displayed in a clear bag).

Foods

- a. Recipe should be included with food items that are placed inside a zippered storage bag with food (do not include record book in the bag).
- b. Maximum size for cake boards is 13 inches wide by 15 inches long-cakes must be able to fit in glass display case.
- c. Cake (decorated) may substitute Styrofoam for cake.
- d. Cake (non-decorated): 4-inch square piece of cake on 6 inch plate
- e. Cookies: 4 on a 6 inch plate
- f. Breads: 1 loaf on a 6 inch plate
- g. Biscuits/muffins: 4 on a 6 inch plate

Posters/Exhibits

- a. Tape exhibit card to the upper right hand corner.

Record Books

- a. **Must be hole punched** on the upper right hand corner for hanging and securely attached to project items displayed.
- b. Maximum binder size ½".

Display Items

- a. 3 dimensional items etc., must be contained in a 12x16 inch display such as a pop can flat. Loose items will not be accepted.

UI EXTENSION BOUNDARY COUNTY
P.O. BOX 267
BONNERS FERRY, ID 83805

RETURN SERVICE REQUESTED

NON-PROFIT
PRSR STD
U.S. POSTAGE
PAID
PERMIT NO. 145
BONNERS FERRY, ID

JULY/AUGUST 2022

KEEPING OUR COMMUNITY CONNECTED

BOUNDARY COUNTY EXTENSION STAFF



Amy Robertson	Extension Educator Family & Consumer Sciences
	Extension Educator Agriculture & Horticulture
Debbie Higgins	4-H Program Coordinator 4-H Friday Friends Program Coordinator
Angela Tucker	Administrative Assistant
Sheila Pruitt	Secretary

*Where trade names used, no discrimination is intended and no endorsement by the University of Idaho Extension System is implied.

College of Agricultural and Life Sciences

The University of Idaho provides equal opportunity in education and employment on the basis of race, color, religion, national origin, gender, age, disability, or status as a Vietnam-era veteran, as required by state and federal laws. Anyone attending programs highlighted in this document that requires auxiliary aids or services should contact the Boundary County Extension Office at P.O. Box 267, Bonners Ferry, ID 83805, or by calling 208.267.3235, or via email at boundary@uidaho.edu at least two weeks prior to the event.