



Owyhee County 4-H

Cloverbud Rabbit Activity Book



Name _____

Age _____ Year in 4-H _____ 20 _____

Club Name _____

Member's Signature _____

Parent/Guardian's Signature _____

Leader's Signature _____

Projects or activities I worked on this year were: _____

I attended _____ club meetings.

I helped the community by: _____

I like being in 4-H because: _____

This year I learned how to: _____

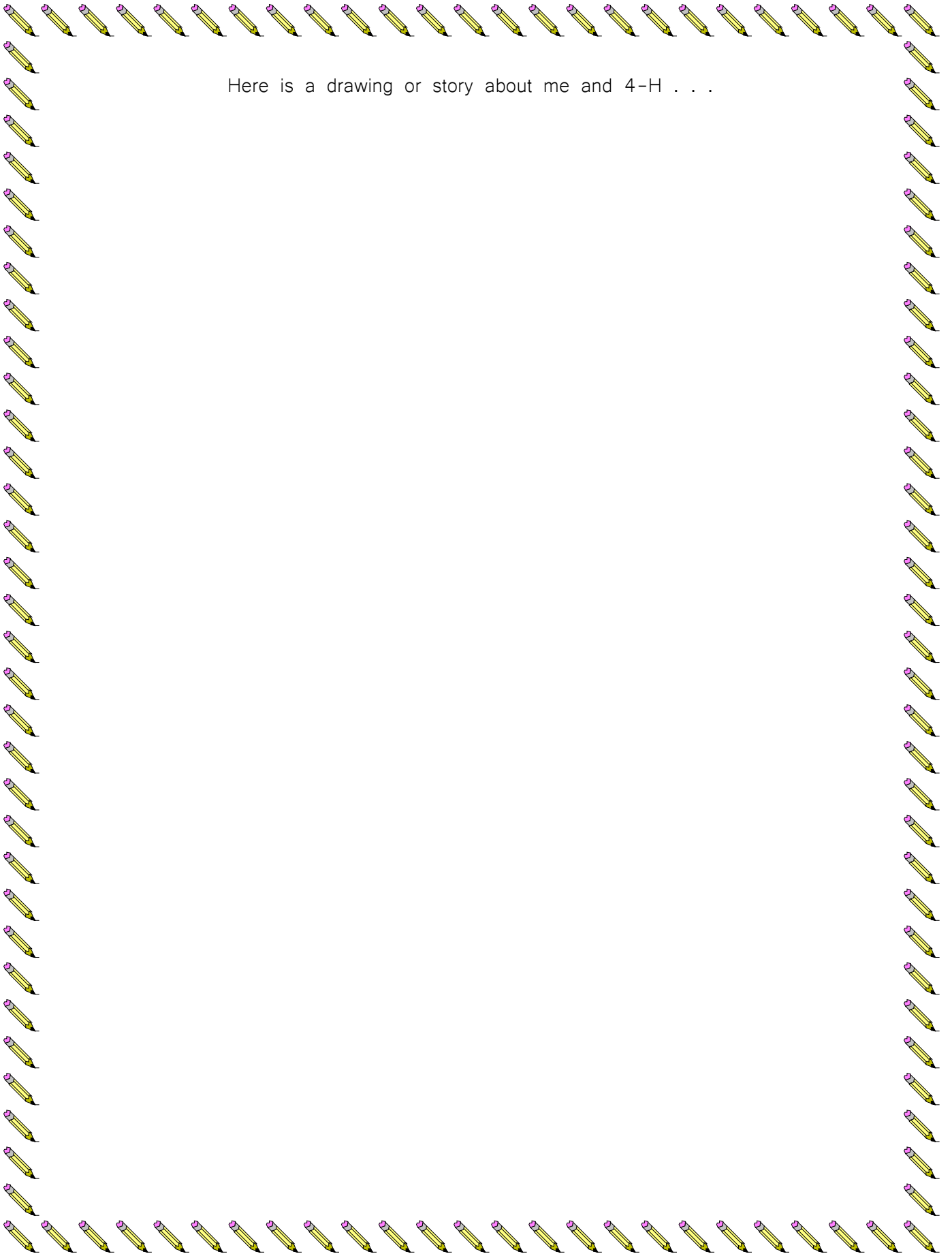
This year I showed others how to: _____





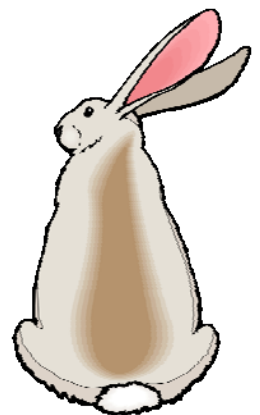
Here are some pictures of me and things I did in 4-H this year . . .





Here is a drawing or story about me and 4-H . . .

Here is a drawing of my rabbit.



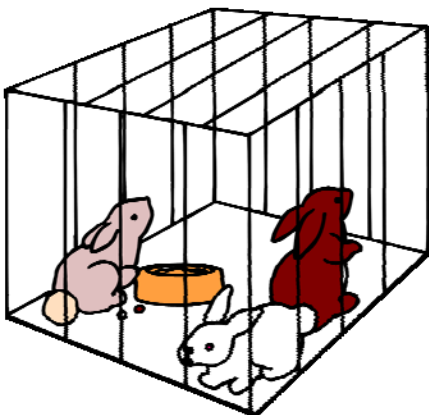
What is your rabbit's name?

What color is your rabbit?

How old is your rabbit?

Please circle your choice on each question below:

1. Does your rabbit live inside or outside?
2. Does your rabbit have long hair or short hair?
3. Is your rabbit a boy or girl?



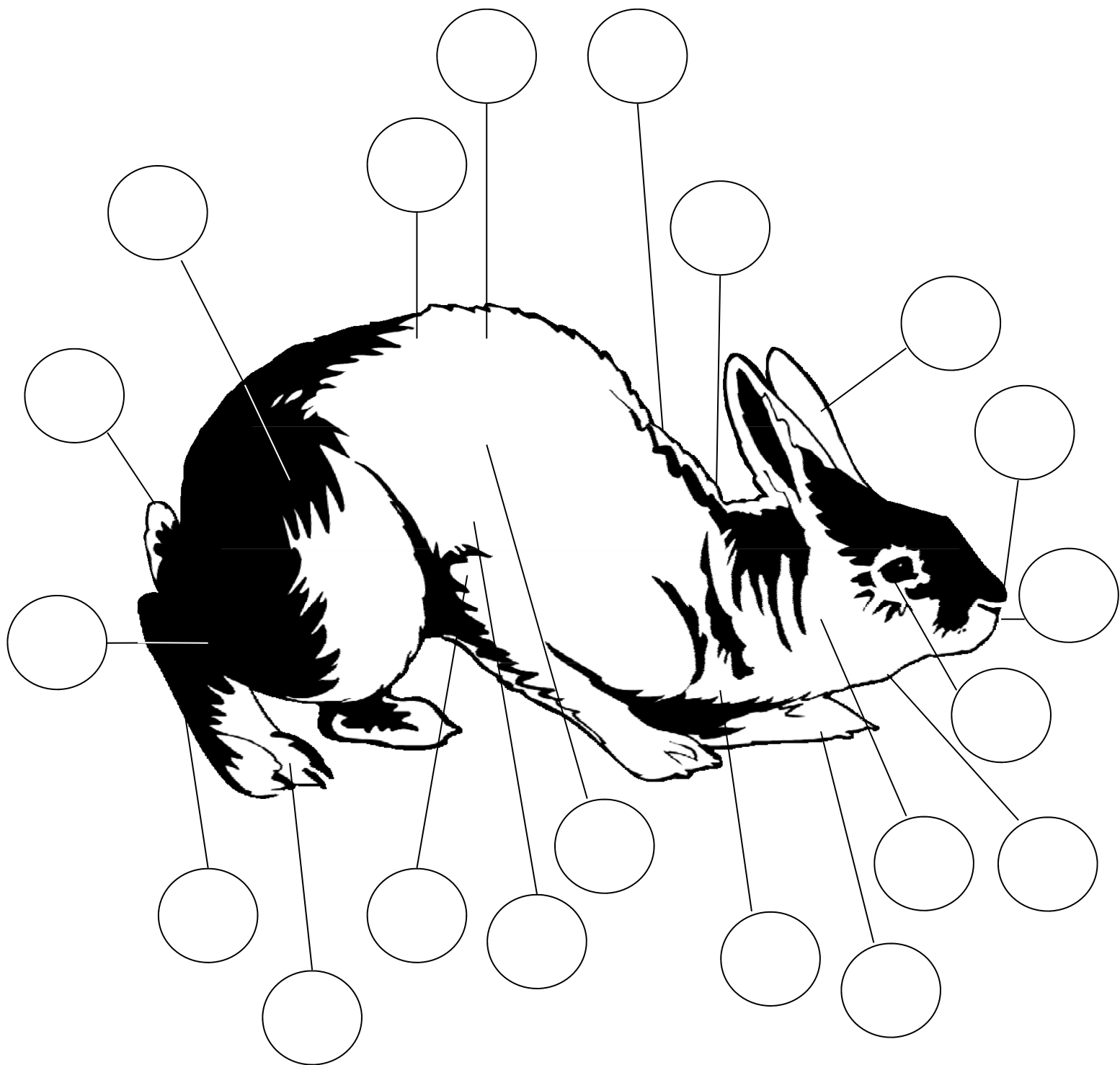
A boy rabbit is called a buck .

A girl rabbit is called a doe .

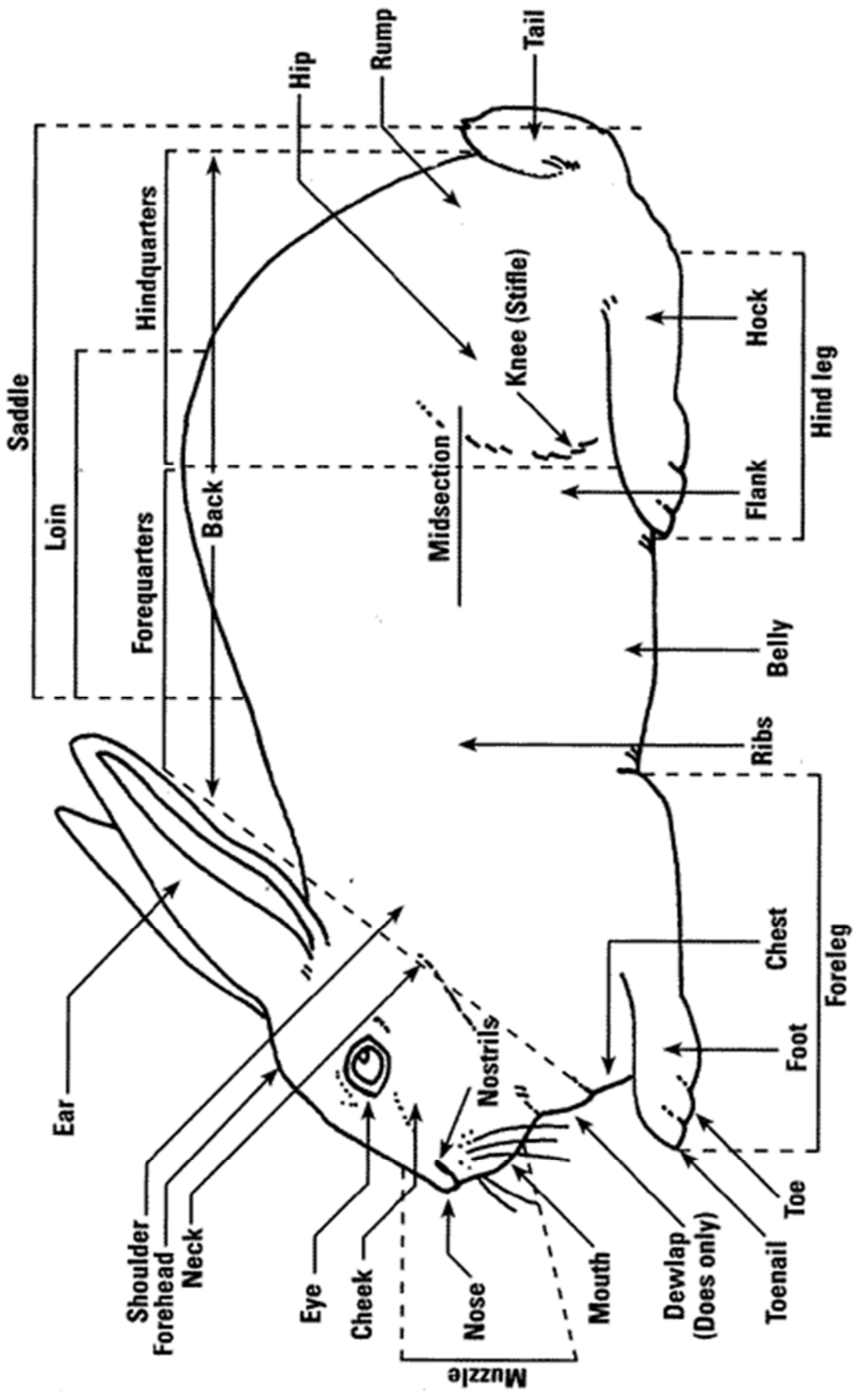
Baby rabbits are called a litter .

Remember these, we'll ask again later!

Write the matching number in the correct circle:



- | | | | | |
|---------|------------------|-------------|----------|---------|
| 1. ear | 5. dewlap (does) | 9. shoulder | 13. Ribs | 17. Leg |
| 2. eye | 6. cheek | 10. flank | 14. Hip | 18. |
| Belly | | | | |
| 3. nose | 7. neck | 11. loin | 15. Tail | 19. |
| Foot | | | | |



RABBIT BREEDS



The **NEW ZEALAND** rabbit can be white, red or black in color. This one is white. They always have pink eyes. They weigh about 10 to 11 pounds when they are full grown. They are an excellent meat rabbit and you will always find a class of these rabbits at fairs.

The **DUTCH** is very popular at the shows and fairs. They are white from the neck to a dividing line behind the front legs. The front legs are white and only the paws of the hind legs are white. They also have a white streak going up on the front of the face called a "blaze." The rest of the body is black, grey, bluish grey, or brown.

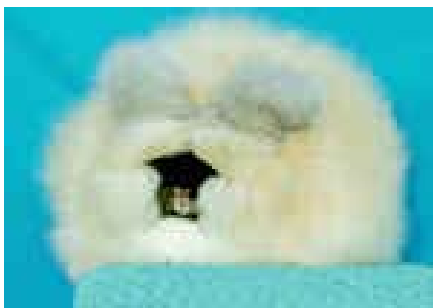


The **CHECKERED GIANT** rabbit originated in Germany. It has a marking of its own. The spots are usually black or bluish grey color and its body is white. It is a very good meat rabbit and weights between 10 and 11 pounds.



The **CALIFORNIAN** breed of rabbit originated in California and was first shown in 1928. It is a very good meat rabbit and very popular at shows and fairs. It weights about 9 pounds when it is full grown. The nose, ears, feet and tail are always black.

The **FRENCH LOP** is another big rabbit which weighs between 10 and 11 pounds. It is an excellent meat rabbit and very popular at rabbit shows and fairs. They come in a variety of colors. The way you can tell this rabbit is that its ears fall down. They are not broken, but they do not stand up like other rabbits.



The **ANGORA** rabbit looks like a fuzzy ball of fur. It is raised for its fur and not its meat. It can weigh from 6 to 8 pounds. They are very soft to touch and the fur feels very silky.

The **SATIN** breed of rabbit was produced and perfected in America. It has a very shiny fur so it is an excellent show rabbit. It weighs about 8 or 9 pounds and can be black, brown, red or like a Californian in color or Siamese.



FOOD FOR YOUR RABBIT

You cannot be successful in raising rabbits if you do not pay attention to what they eat.

Use a good commercial feed for your rabbit. Don't overfeed or under feed your rabbit.



Regular feeding is important. Always feed in the morning or the night and check them one other time each day. If you feed in the morning, check them at night. In the summer, rabbits will eat better in the evening than during the day. Do you know why?

Rabbit pellets are made especially for rabbits and contain protein, alfalfa, minerals and vitamins.

Since rabbits have a tendency to gnaw on anything they can reach, alfalfa can be supplied once in a while to help keep them occupied.

Clean fresh water is very important. Always keep it available during hot weather. During freezing weather, see that your rabbit gets to drink at least twice a day. Empty the pans after they have finished drinking to prevent the water from freezing.



Draw a line to match the food this rabbit eats.

ALFALFA

WATER

SALT

RABBIT PELLETS



EXPERIMENT

Do this experiment and discover how much water a rabbit will drink in 24 hours of one day.

You will need: a one cup measure
 a quart jar or container
 a gallon container
 water

Ask your 4-H leader or a family member to help you.



1. Using the cup measure, count how many cups fill a quart.



2. Using the quart container, count how many quarts of water it takes to fill the gallon container.

3. Now, in the gallon container you have the amount of water a rabbit drinks in one day!

In step 1, how many cups did you find were in a quart? _____

In step 2, how many quarts did you discover were in a gallon? _____

1. In our experiment we learned that rabbits drink (circle one):

a lot of **a little** water.

2. It is important to water your rabbit every day.

Yes **No**

YOUR RABBIT'S HOME

Each rabbit should have a minimum of one square foot of floor space per pound of body weight. Usually 2 feet by 6 feet is room enough for a large rabbit; 4 feet by 4 feet for a medium-sized rabbit; and 2 feet by 3 feet for a small rabbit.

What size home will your rabbit need?

_____ x _____



If the rabbit's home is outside, it must have a roof that will protect it from the rain and a tight fitting door with a latch so dogs or other animals can't get in. The back of the hutch would be to the prevailing winds. During cold weather, a panel may be attached to the bottom of the hutch to close the area to reduce drafts.

Be sure to clean often!



We said we would ask you these questions again later. Do you remember the answers?

A boy rabbit is called a _____.

A girl rabbit is called a _____.

Baby rabbits are called a _____.



I Pledge



4-H Pledge

My Head to Clearer Thinking,

My Heart to Greater Loyalty,

My Hands to Larger Service

and My Health to Better Living,

For My Club, My Community, My Country, and My World.

(Right Hand over Heart)



(Arms at Sides)



(Right Hand Points to Forehead)



(Arms Slightly Bent Palms Up)



University of Idaho Extension

Would you like to learn more about all the 4-H projects and activities in Owyhee County?

Contact us at:
208-896-4104 ♦ owyhee@uidaho.edu
www.owyheecounty.net

