

Cultivating “Civity”

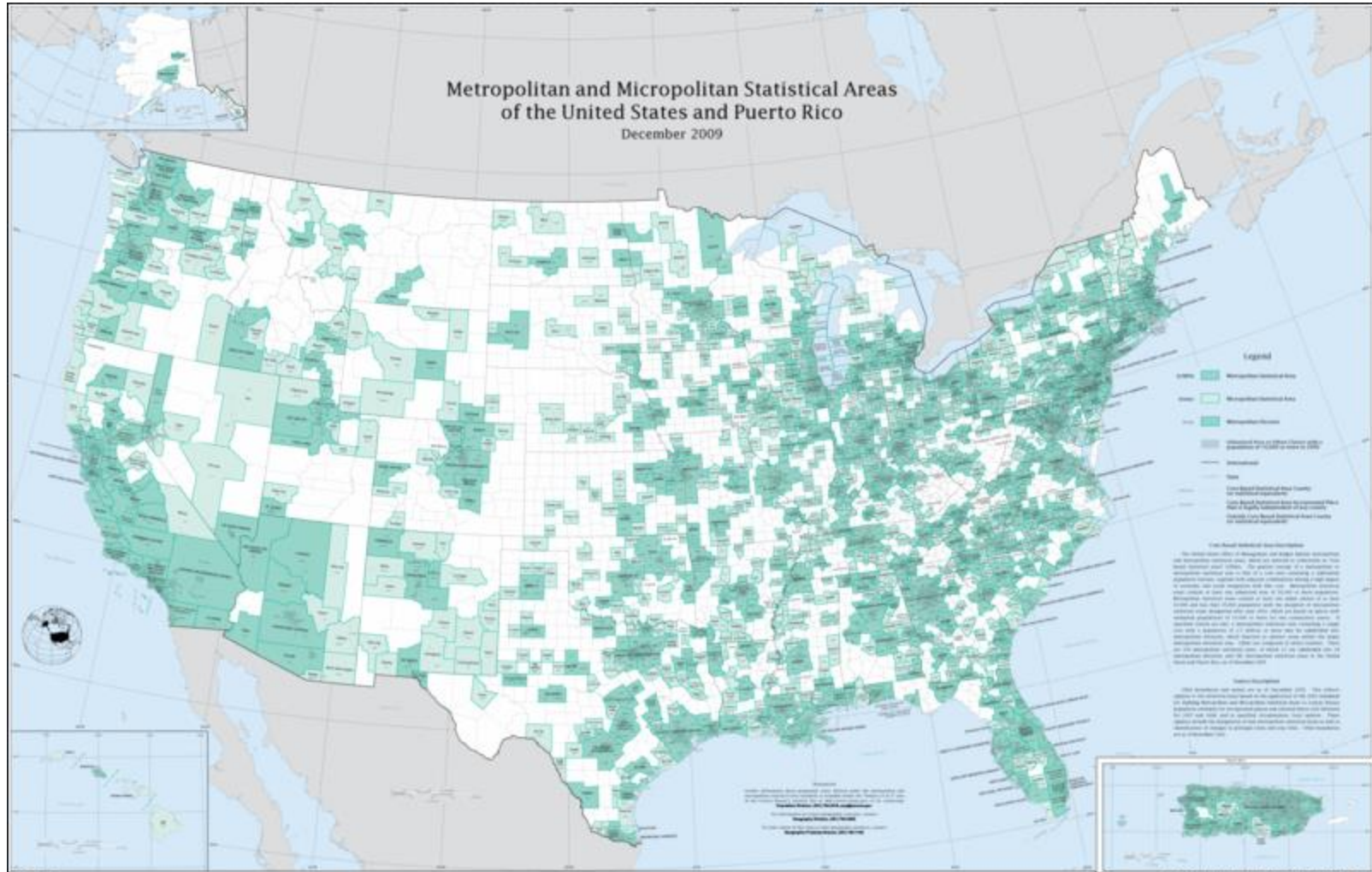
Enhancing City Resilience
with Bridging Relationships
and Increased Trust

Palma Joy Strand
Creighton Law School

“City”



“City”





Complex Adaptive Systems



City-System



“We are the city.”

Geoffrey West



Resilience:

“the ability to change or adapt in response to stresses and strains.”

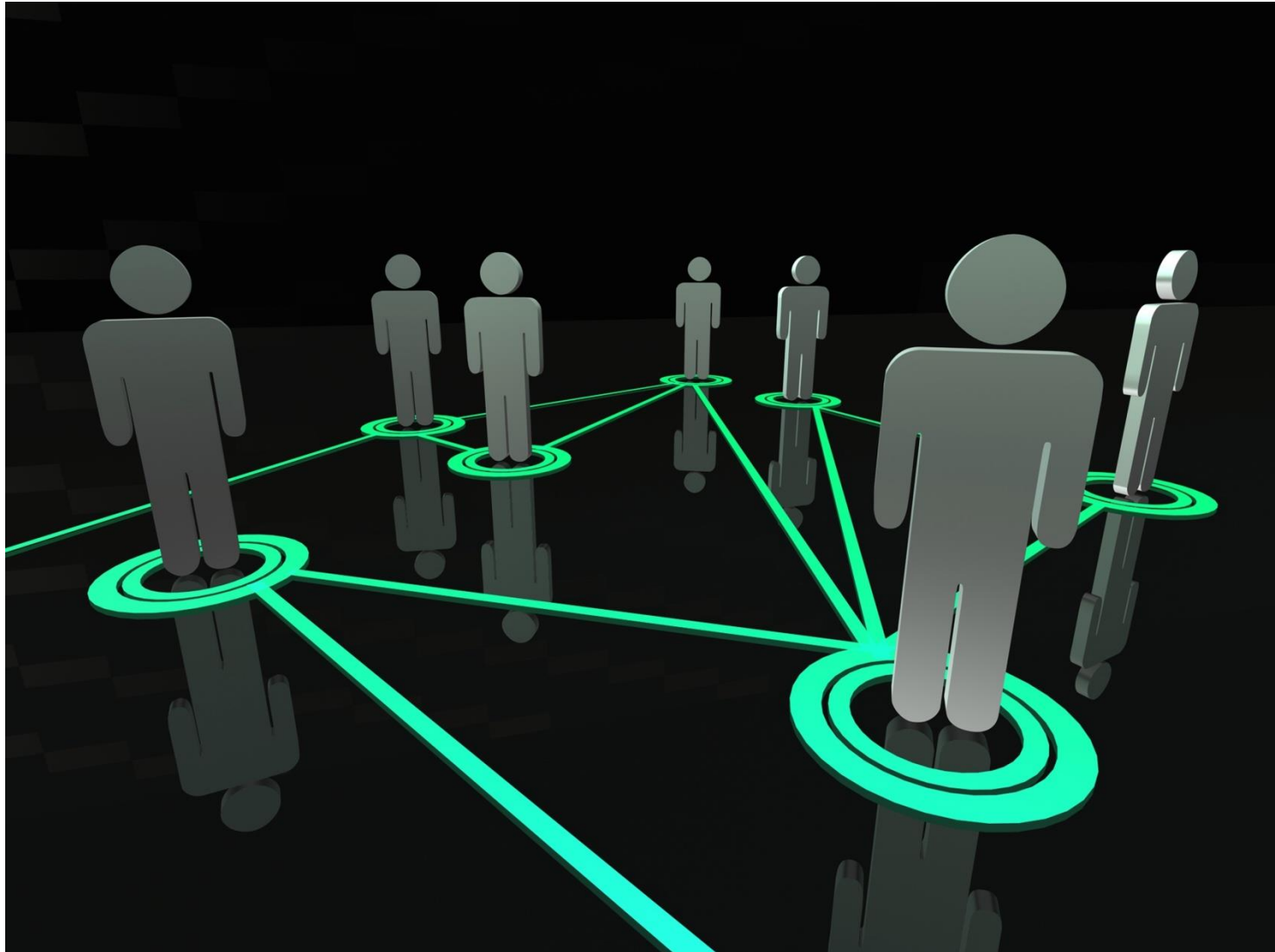
Pendall, Foster & Cowell



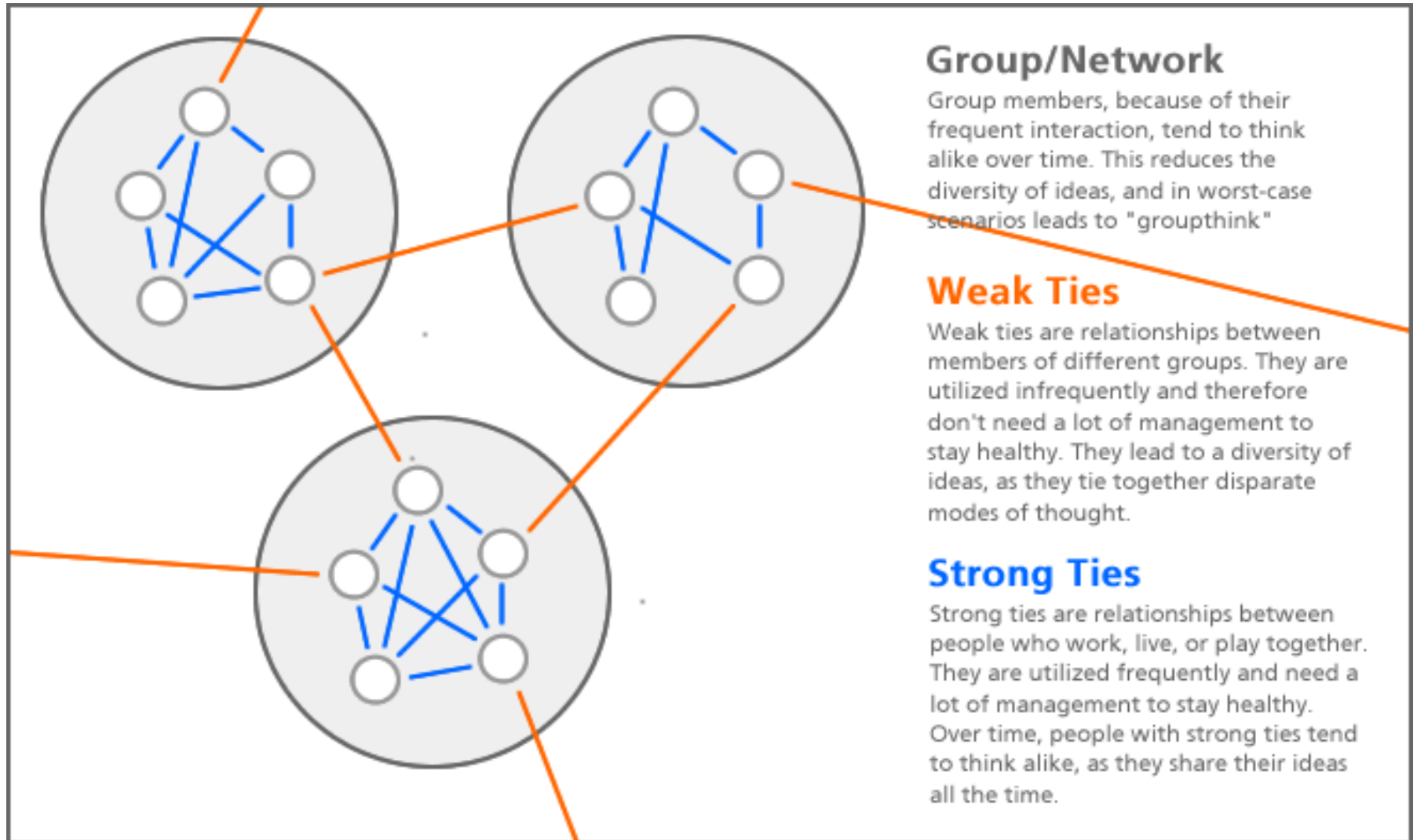




Social Networks



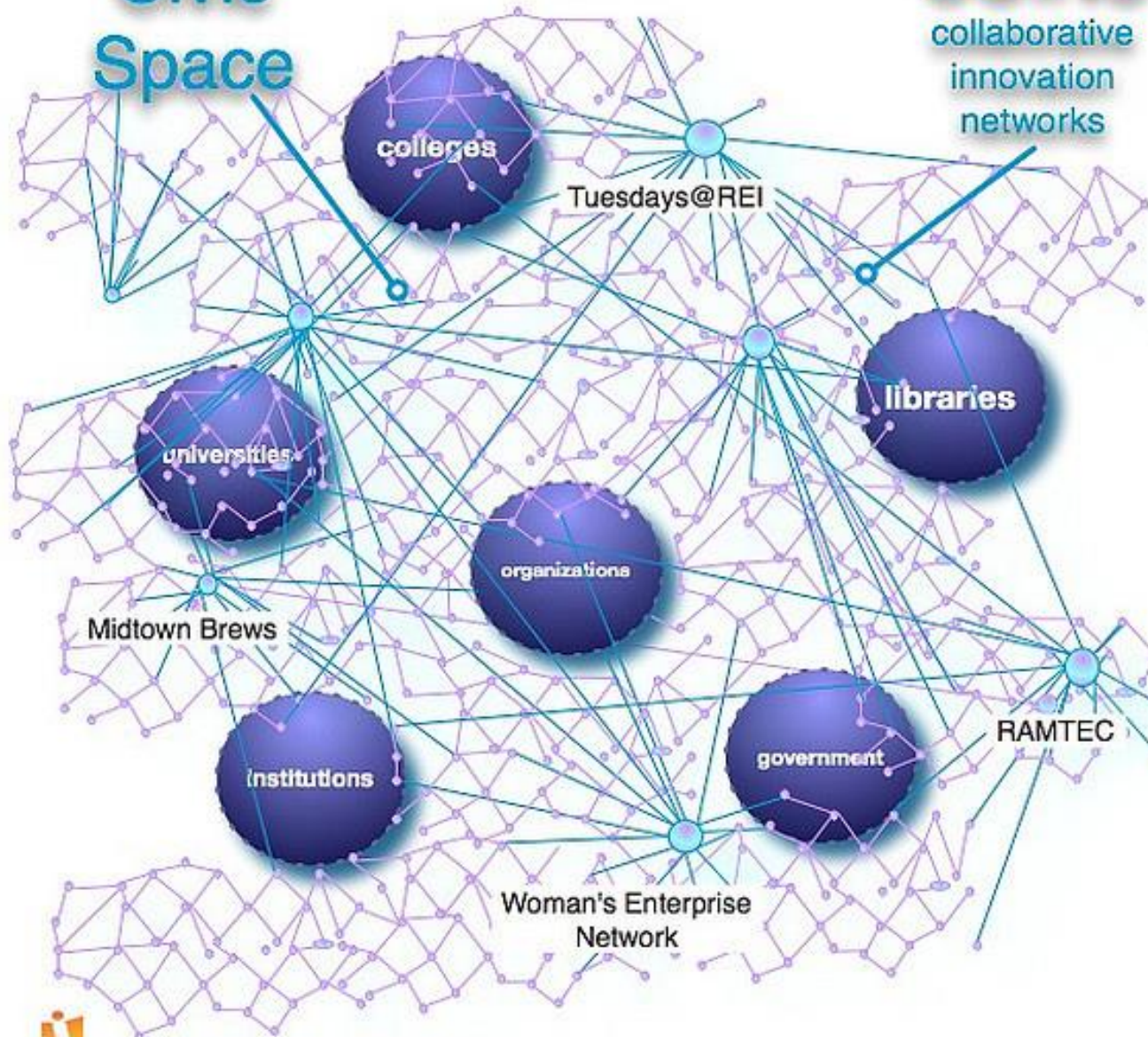
Weak-Tie, Small-World Networks



Civic Space

COINS

collaborative
innovation
networks





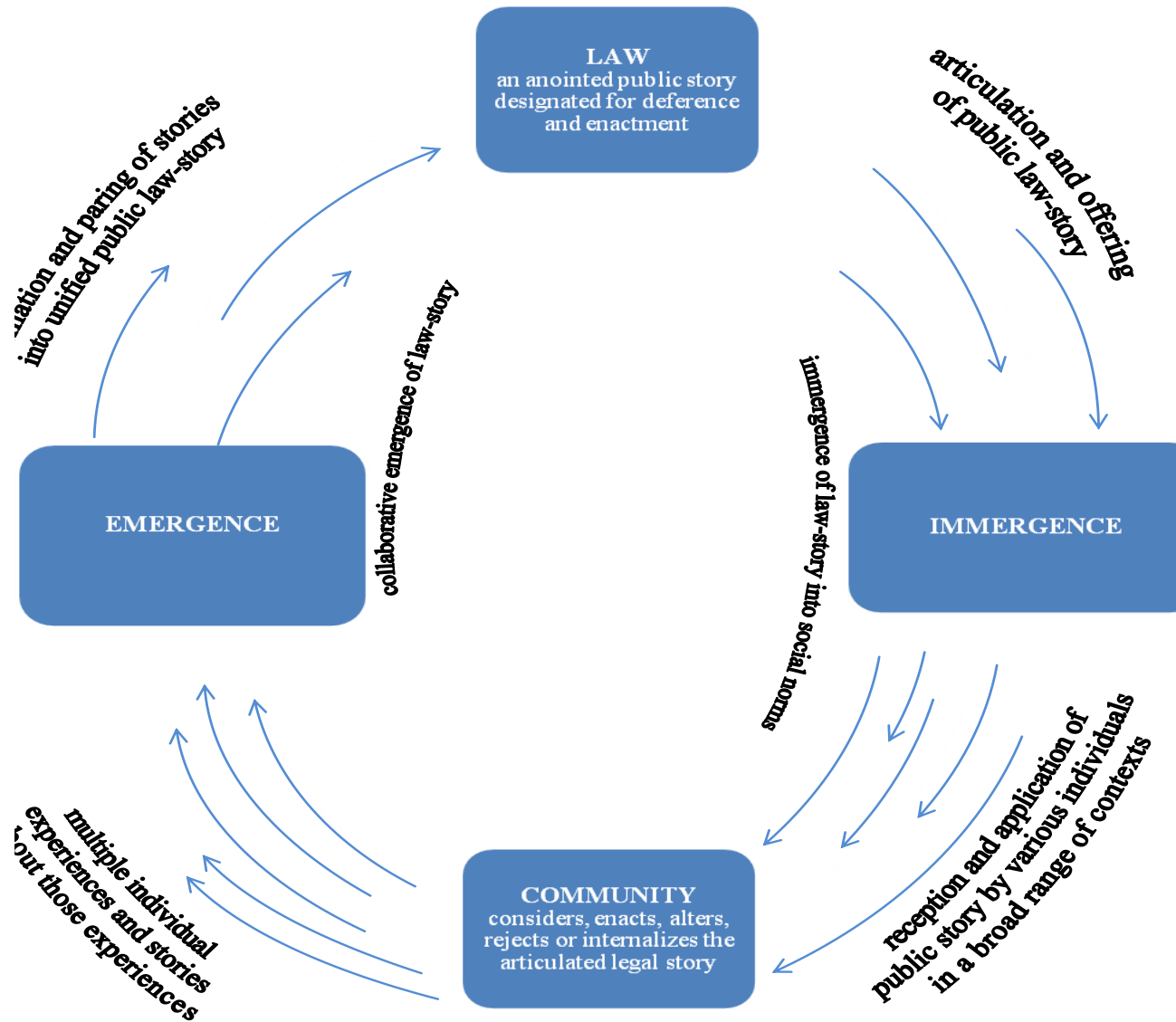
Framework for Civic Relationships

Voices Joined to Achieve Arlington's Vision

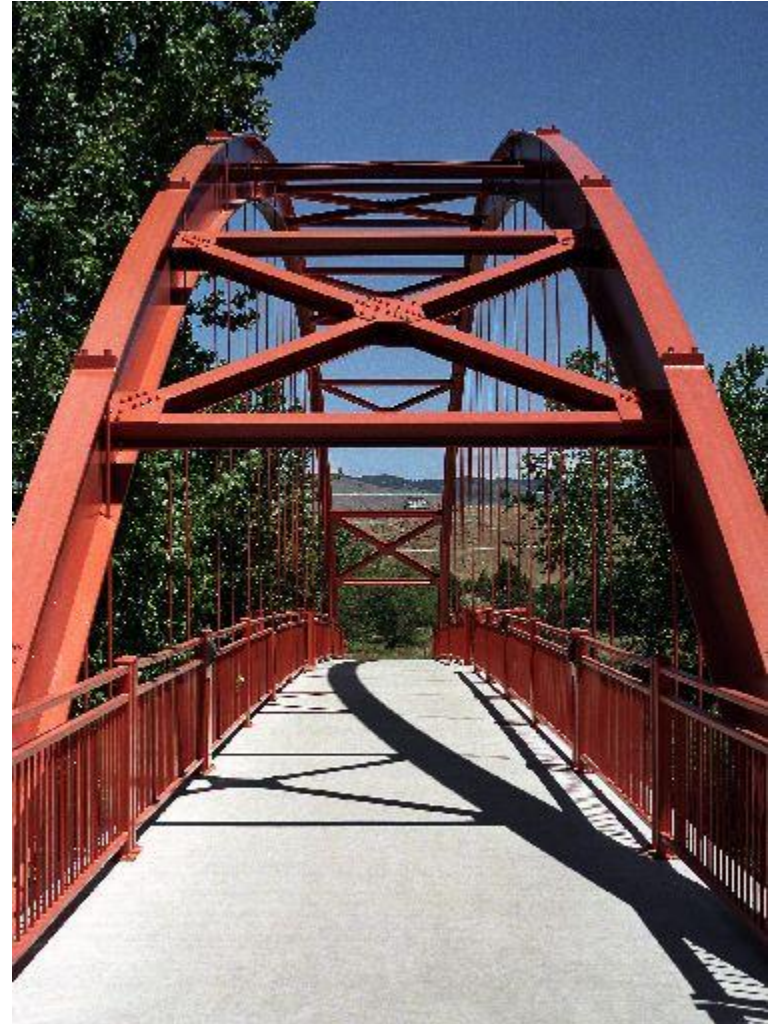
	COMMUNITY	STAFF	BOARD
Commitment	<ul style="list-style-type: none"> We are a caring community We seek and stay informed about issues that affect the whole community We get involved We take initiative in problem solving 	<ul style="list-style-type: none"> We value the community input We actively seek community input to our projects and decisions We design processes that provide the activities and time needed for meaningful engagement 	<ul style="list-style-type: none"> We nurture the partnership between community & gov't. We believe that good ideas can come from anyone We support processes to make better decisions
Clarity	<ul style="list-style-type: none"> We identify opportunities to improve Arlington, and provide input into decision processes We strive to build consensus around possible solutions to issues and concerns We define consensus as outcomes that most participants can live with 	<ul style="list-style-type: none"> We specify at the start of a process the opportunities for public input and influence We provide transparency on decision making processes We give feedback on how we considered community input We respect and report diverse viewpoints We define consensus as outcomes that most can live with 	<ul style="list-style-type: none"> We strive for clarity of everyone's roles and responsibilities We provide opportunity to identify values, facts and policies that underpin issues We define consensus as outcomes most participants can live with
Connections	<ul style="list-style-type: none"> We reach out to new residents and other parts of the community We seek to include and engage all residents We share information via a variety of forums We initiate and organize meetings/forums 	<ul style="list-style-type: none"> We design processes that engage and provide access to all interested parts of the community We speak many languages We engage people from their point of view We initiate and organize meetings and forums 	<ul style="list-style-type: none"> We ensure that all voices in our community have the chance to participate and be heard
Communication	<ul style="list-style-type: none"> We voice our opinions and listen to each other We advocate for policies, resources and programs to improve the community We generate new ideas to solve and/or address concerns 	<ul style="list-style-type: none"> We listen to our community We provide the information needed for meaningful engagement We advocate for policies, resources to improve community We generate new ideas to solve and/or address concerns We support latest technology and more traditional formats 	<ul style="list-style-type: none"> We clearly communicate our decisions and rationale We listen to all concerns
Civility	<ul style="list-style-type: none"> We respect and value all participants' ideas and opinions We value all participants' time and are respectful of timelines 	<ul style="list-style-type: none"> We value and respect people's time We design and facilitate process based on civil dialogue 	<ul style="list-style-type: none"> We do not shy away from conflict, but respectfully discuss our differences
Capacity	<ul style="list-style-type: none"> We contribute our talents, skills, energy & time We build on our existing community resources and assets (non financial) 	<ul style="list-style-type: none"> We contribute our skills and ideas We provide staff with training needed for civic engagement We measure our success in transparent ways We learn from each process and refine our approaches We help people join our processes at any point 	<ul style="list-style-type: none"> We assure access to the resources and educational opportunities needed for everyone to participate

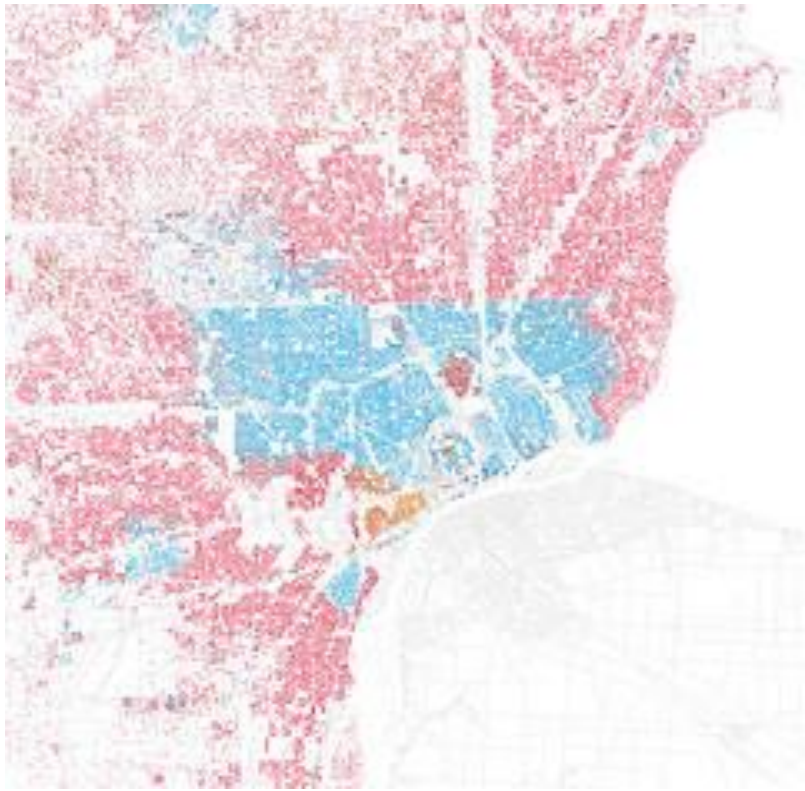
Civity

LAW-AS-STORY COMPLEX SOCIAL SYSTEM



Building “Bridging” Relationships



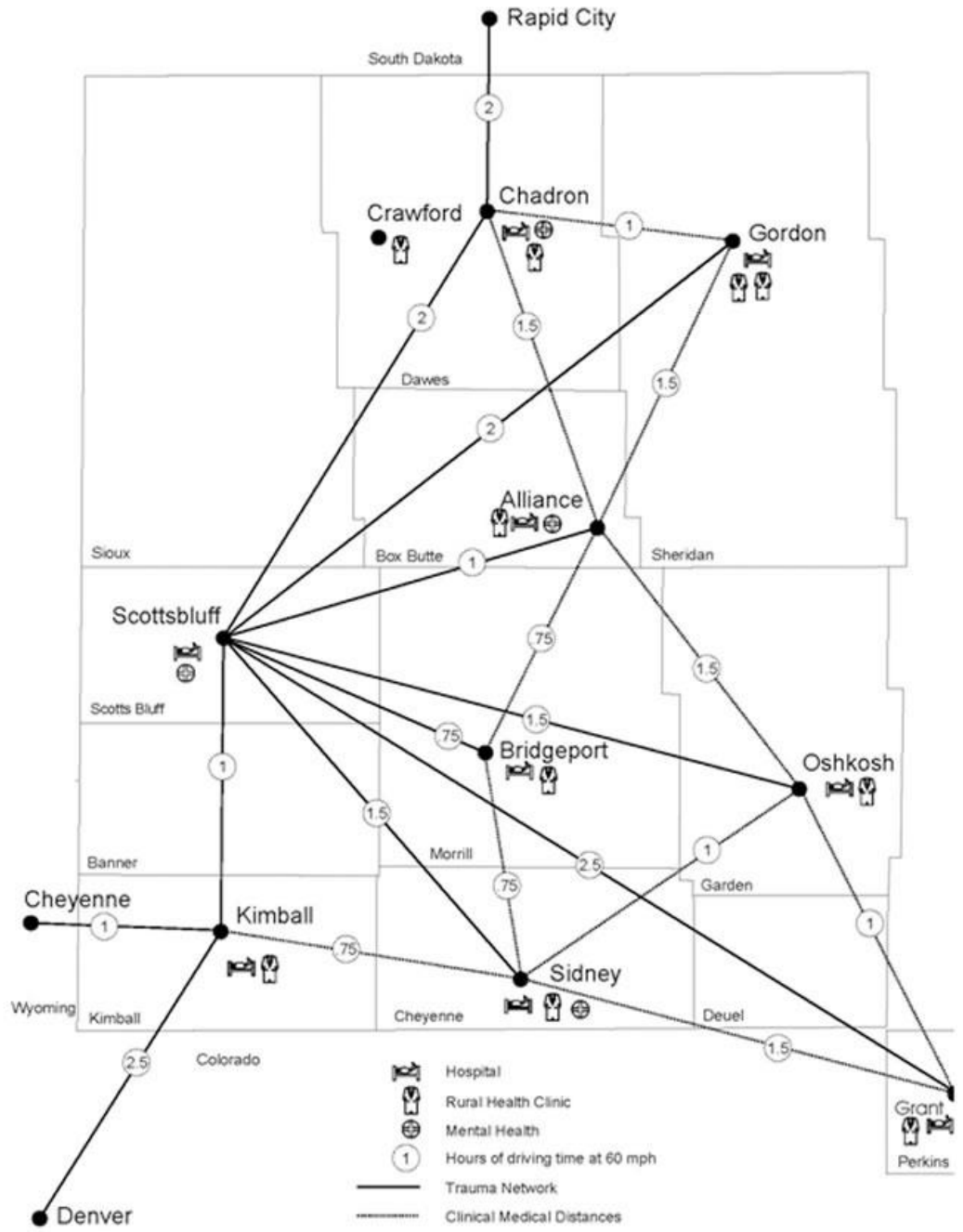


Bridges across demographic divides



AFFIRMATIVELY FURTHERING FAIR HOUSING PROPOSED RULE
BACKGROUND MATERIALS, AND PROTOTYPE GEOSPATIAL TOOL

Bridges between jurisdictions



Bridges across sectors



Nonprofit Association of the Midlands



Connect. Promote. Strengthen.

Bridging among issues

Nurturing Trust

*“Creativity comes from
trust.”*

Rita Mae Brown



Community gardens

Trust in bridging relationships



Join the gang @

Fears

starring

Where *not* everybody
shares your pain

What if manmade climate
change is real *and* the social
welfare state is doomed?
We might just need a beer.

The
Village
Square



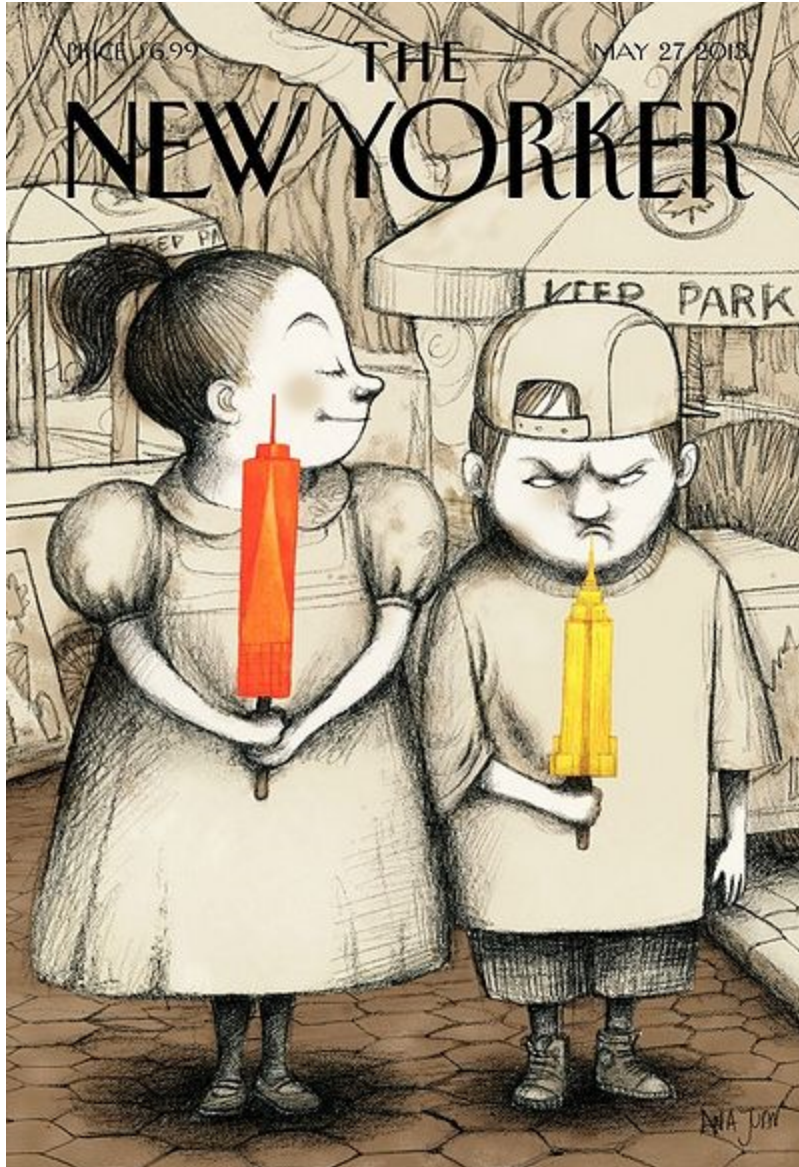
Photo credit: Bob Howard

IAP2 Spectrum of Public Participation



Increasing Level of Public Impact 

	Inform	Consult	Involve	Collaborate	Empower
Public participation goal	To provide the public with balanced and objective information to assist them in understanding the problem, alternatives, opportunities and/or solutions.	To obtain public feedback on analysis, alternatives and/or decisions.	To work directly with the public throughout the process to ensure that public concerns and aspirations are consistently understood and considered.	To partner with the public in each aspect of the decision including the development of alternatives and the identification of the preferred solution.	To place final decision-making in the hands of the public.
Promise to the public	We will keep you informed.	We will keep you informed, listen to and acknowledge concerns and aspirations, and provide feedback on how public input influenced the decision.	We will work with you to ensure that your concerns and aspirations are directly reflected in the alternatives developed and provide feedback on how public input influenced the decision.	We will look to you for advice and innovation in formulating solutions and incorporate your advice and recommendations into the decisions to the maximum extent possible.	We will implement what you decide.
Example techniques	<ul style="list-style-type: none"> ■ Fact sheets ■ Web sites ■ Open houses 	<ul style="list-style-type: none"> ■ Public comment ■ Focus groups ■ Surveys ■ Public meetings 	<ul style="list-style-type: none"> ■ Workshops ■ Deliberative polling 	<ul style="list-style-type: none"> ■ Citizen advisory committees ■ Consensus-building ■ Participatory decision-making 	<ul style="list-style-type: none"> ■ Citizen juries ■ Ballots ■ Delegated decision



Civity
entrepreneurs

*“We have met the enemy,
and he is us”*



Enhancing City Resilience
by
Cultivating Civility